

Description	Capacity	Final pressure	Material
SIHdry H630 dry running vacuum pump	600 m ³ /h	<0,01 mbar abs	Nodular iron

Capacity	Vacuum	Gas outlet temperature	Material	Sound pressure level
600 m ³ /h	<0,01 mbar abs	≤ 160°C (T3)	Nodular iron	<63dB(A)

Description

SIHI® Dry H630 –an intelligent vacuum system with integrated communication interface.

Vertical, dry running oil free vacuum pump with electronically synchronized spiders that enables a silent operation of the vacuum system; it also makes all service for maintaining and changing gear oil obsolete.

The unit is easy to install (plug&pump).

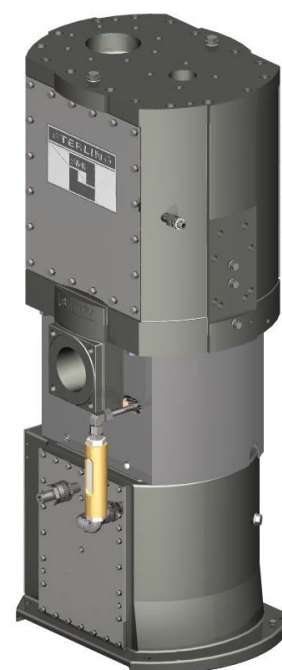
Range of application

The SIHI® Dry vacuum systems can be used for all chemical applications, where a robust, explosion proof and high reliable dry vacuum pump is required.

Design

SIHI® Dry vacuum systems in compact design have been especially developed for use in hazardous applications. It is based upon a dry running twin screw principle working as a single stage vacuum pump.

The inlet is at the top and outlet is on the bottom of the pump, this design makes it possible for the pump to drainage itself.



Material

Description	Position	Material
Casing cover	10	1.0553
Casing	20	EN-GJS-400-18-LT (GGG 40.3)
Twin screws	30	1.4122
Labyrinth seal	40	EN-GJL-250
Bearing cartridge	50	1.4122
Coolant loop	60	Brass, EPDM / Stainless steel, Cu/ GJS
Motor casing	70	EN-GJS_400-18-LT