

# Vacuum pump

LPH

LPH 75320/75330/75340

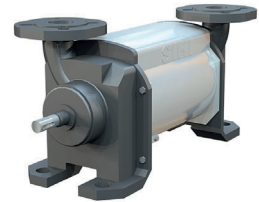
<b>Capacity</b> 500-1700 m <sup>3</sup> /h	<b>Pressure range</b> 33-1013mbar	<b>Material</b> Cast iron & Stainless steel
-----------------------------------------------	--------------------------------------	------------------------------------------------

## Description

A two step fluid ring vacuum pump with a simple, robust construction. With a free shaft end all options of shaft coupling, motor and DIN seals are available to adapt the pump to your industry.

## Range of application

Evacuation and pumping of dry gases and saturated steam. Typical industries are chemistry, pharmaceutical, food, plastic and rubber industry. Vacuum is used for distillation, drying, degassing, filling and boiling.



AT 6300

## Design

The pump works according to the liquid ring principle. Fluid pumps are in some regards related with displacement pumps since the pump wheel is eccentrically located in the round pump body. When the wheel is rotating a fluid ring is created along the pump body's inner wall. In the cells (the space between the pump body's wings) inside the fluid ring rising part volumes (intake) and then decreasing volumes (outlet) will be created under one rotation.

## Product key (example LPHA 75320 BN 135 02 0)

Pos	Description	Code	Explanation
1-3	Pump model	LPH	Liquid ring vacuum pump
4	Construction	A	
5-		40106-	
10	Pump size	60527	One stage pump
		45008-	
		75340	Two stage pump
11	Bearings+ sense of rotation	B	Two grease lubricated antifriction bearings
		N	one shaft end clockwise
13-			
15	Sealing	041	Gland packing, double
		135	Mechanical sealing SIHI FK EBPGG
		AA1	Mechanical sealing SIHI FK GBVGG
16-			
17	Material	02	See table below
		42	See table below
18	Gasket	0	O-ring

## Material combinations

Pos	02	42
Casing	0.6025 Cast iron	1.4408 Acid-proof steel
Central body	0.6025 Cast iron	1.4408 Acid-proof steel
Guide disc	0.6025 Cast iron	1.4408 Acid-proof steel
Shaft	1.1191+N Steel	1.4571 Acid-proof steel
Impeller	1.0619 Steel	1.4408 Acid-proof steel

## Dimensions (mechanical sealing)

	a	m1	m2	o3	Weight material 02	Weight material 42
75320	54	70	62	123		
	0	0	0	5	450	485

## Connections

Connections	Designation 75320
UB	Service fluid G 2
Uc	Cavitation protection G 3/8
Ue	Drainage G 1/4
Use	Dirt drainage G 1/2
UI	Air vent G 1 1/2
Um	Pressure sensor G 3/8
Um1	Drain / level sensor G 1/2

## Service fluid in m<sup>3</sup>/h

Pressure mbar	in	33	120	200	400
75320		7	6	5	3
Total service fluid by installation where the fluid is directed straight in to the drain. For other installations ask Armatec					