

Vacuum pump

LPHX

LPH 65320/65327

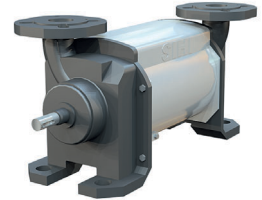
Capacity 300-700 m ³ /h	Pressure range 33-1013mbar	Material Cast iron & Stainless steel
--	--------------------------------------	--

Description

A two stage liquid ring vacuum pump with a simple, robust construction. With a free shaft end all options of shaft coupling, motor and DIN seals are available to adapt the pump to your industry.

Range of application

Evacuation and pumping of dry gases and saturated steam. Typical industries are chemistry, pharmaceutical, food, plastic and rubber industry. Vacuum is used for distillation, drying, degassing, filling and boiling.



AT 6300

Design

The pump works according to the liquid ring principle. Fluid pumps are in some regards related with displacement pumps since the pump wheel is eccentrically located in the round pump body. When the wheel is rotating a fluid ring is created along the pump body's inner wall. In the cells (the space between the pump body's wings) inside the fluid ring rising part volumes (intake) and then decreasing volumes (outlet) will be created under one rotation.

Product key (example LPHX 65327 AB AGE 0B 1)

Pos	Description	Code	Explanation
1-3	Pump model	LPH	Liquid ring vacuum pump
4	Construction	X	
5-10	Pump size	40106-60527	One stage pump
		45008-65327	Two stage pump
11	Hydraulics	A	
12	Bearings	B	Two grease lubricated roller bearings
13-15	Sealing	041	Gland packing, double
		AGE	Mechanical sealing SIHI FK EBPGG
		AG1	Mechanical sealing SIHI FK GBVGG
		BFG	Mechanical sealing Burgmann M7N SAVGG
		CAD	Mechanical sealing John Crane 59U BSTGG
16-17	Material	0K	See table below
		4B	See table below
18	Gasket	1	O-ring

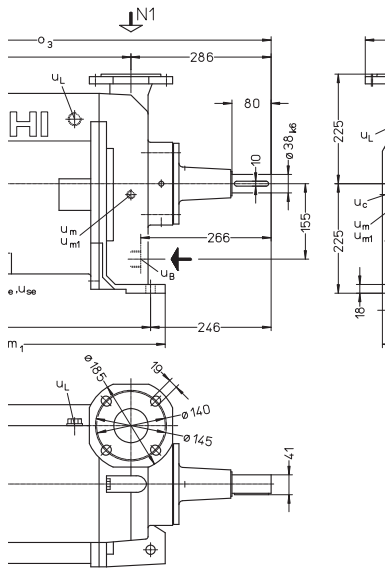
Material combinations

Pos	0B	4B
Casing	0.6025 Cast iron	1.4408 Acid-proof steel
Central body	0.6025 Cast iron	1.4408 Acid-proof steel
Guide disc	0.6025 Cast iron	1.4404 Acid-proof steel
Shaft	1.4021 Stainless steel	1.4404 Acid-proof steel
Impeller	1.0553/1.0619 Steel	1.4517/1.4408 Acid-proof steel

Vacuum pump

LPHX

LPH 65320/65327



Dimensions (Mechanical sealing)

	a	m1	m2	o3	Weight
65320	500	640	580	920	200

Connections

Connections	Designation
UB	Service fluid G 1
Uc	Cavitation protection G 1/4
Ue	Drainage G 1/2
Use	Dirt drainage G 1/2
UI	Air vent G 3/4
Um	Pressure sensor G 3/8 (G 3/4 for performance 4B)
Um1	Drain / Level sensor G 3/8 (G 3/4 for performance 4B)

Service fluid in m³/h

Pressure mbar	in	33	120	200	400
65320		2,7	2,5	2,2	1,5
Total service fluid by installation where the fluid is directed straight in to the drain. For other installations ask Armatec					