

Vacuum pump

LPHX

LPH 45008/45311/45316

Capacity 55-258m ³ /h	Pressure range 33-1013mbar	Material Cast iron & Stainless steel
--------------------------------------------	--------------------------------------	------------------------------------------------

Description

A two stage liquid ring vacuum pump with a simple, robust construction.

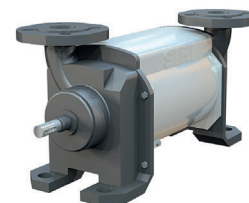
With a free shaft end all options of shaft coupling, motor and DIN seals are available to adapt the pump to your industry.

Range of application

Evacuation and pumping of dry gases and saturated steam.

Typical industries are chemical, pharmaceutical, food, plastic and rubber industry.

Vacuum is used for distillation, drying, degassing, filling and boiling.



AT 6300

Design

The pump works according to the liquid ring principle. Fluid pumps are in some regards related with displacement pumps since the pump wheel is eccentrically located in the round pump body. When the wheel is rotating a fluid ring is created along the pump body's inner wall. In the cells (the space between the pump body's wings) inside the fluid ring rising part volumes (intake) and then decreasing volumes (outlet) will be created under one rotation.

Material combinations

Pos	OK	4B
Vacuum casing	0.6025 Cast iron	1.4408 Acid-proof steel
Central body	0.6025 Cast iron	1.4408 Acid-proof steel
Guide disc	0.6025 Cast iron	1.4404 Acid-proof steel
Shaft	1.4021 Stainless steel	1.4404 Acid-proof steel
Impeller	1.4308 Stainless steel	1.4408 Acid-proof steel

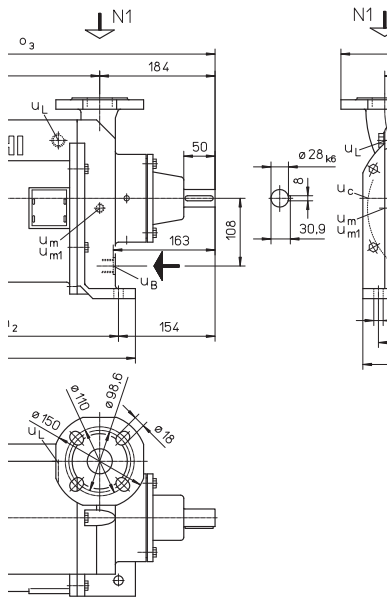
Product key (example LPHX 45008 AB AGE OK 1)

Pos	Description	Code	Designation
1-3	Pump model	LPH	Liquid ring vacuum pump
4	Construction	X	
5-10	Pump size	40106-60527	One stage pump
		45008-65327	Two stage pump
11	Hydraulics	A	
12	Bearings	B	Two grease lubricated roller bearings
13-15	Sealing	041	Gland packing, double
		AGE	Mechanical sealing SIHI FK EBPGG
		AG1	Mechanical sealing SIHI FK GBVGG
		BFG	Mechanical sealing Burgmann M7N SAVGG
		CAD	Mechanical sealing John Crane 59U BSTGG
16-17	Material	OK	See table below
		4B	See table below
18	Gasket	1	O-ring

Vacuum pump

LPHX

LPH 45008/45311/45316



Dimensions

	a	m1	m2	o3	Weight
45008	239	353	299	526	68

Connections

Connection	Designation
UB	Service fluid G 1/2
Uc	Cavitation protection G1/8
Ue	Drainage G 1/8
Use	Dirt drainage G 1/8
UI	Air vent G 1/2
Um	Pressure sensor G 1/4
Um1	Drain / level sensor G1/4

Service fluid in m³/h

Pressure mbar	in	33	120	200	400
45008		0,9	0,8	0,75	0,6
Total service fluid by installation where the fluid is directed straight in to the drain. For other installations ask Armatec					