

Vacuum pump

LPHX

LPH 40106/40411/40516

Capacity 50-270m ³ /h	Pressure range 150-1013 mbar	Material Cast iron & Stainless steel
--	--	--

Description

A one stage liquid ring vacuum pump with a simple, robust construction.

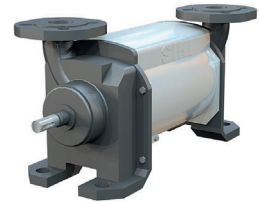
With a free shaft end all options of shaft coupling, motor and DIN seals are available to adapt the pump to your industry.

Range of application

Evacuation and pumping of dry gases and saturated steam.

Typical industries are chemical, pharmaceutical, food, plastic and rubber industry.

Vacuum is used for distillation, drying, degassing, filling and boiling.



AT 6300

Design

The pump works according to the liquid ring principle. Fluid pumps are in some regards related with displacement pumps since the pump wheel is eccentrically located in the round pump body. When the wheel is rotating a fluid ring is created along the pump body's inner wall. In the cells (the space between the pump body's wings) inside the fluid ring rising part volumes (intake) and then decreasing volumes (outlet) will be created under one rotation.

Product key (example LPHX 40106 AB AGE OK 1)

Pos	Description	Code	Explanation
1-3	Pump model	LPH	Liquid ring vacuum pump
4	Construction	X	
5-10	Pump size	40106-60527	One stage pump
		45008-65327	Two stage pump
11	Hydraulics	A	
12	Bearings	B	Two grease lubricated roller bearings
13-15	Sealing	041	Gland packing, double
		AGE	Mechanical sealing SIHI FK EBPGG
		AG1	Mechanical sealing SIHI FK GBVGG
		BFG	Mechanical sealing Burgmann M7N SAVGG
		CAD	Mechanical sealing John Crane 59U BSTGG
16-17	Material	OK	See table below
		4B	See table below
18	Gasket	1	O-ring

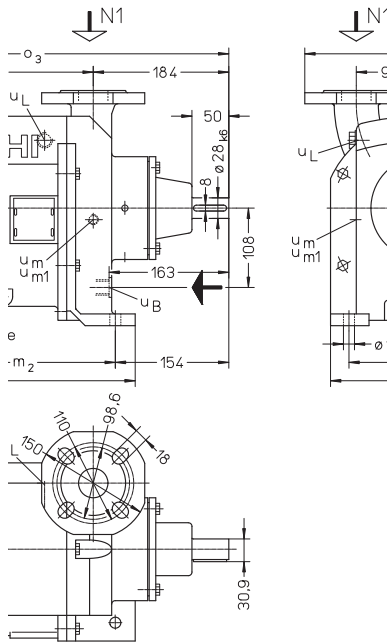
Material combinations

Pos	OK	4B
Casing	0.6025 Cast iron	1.4408 Acid-prof steel
Central body	0.6025 Cast iron	1.4408 Acid-prof steel
Guide disc	0.6025 Cast iron	1.4404 Acid-prof steel
Shaft	1.4021 Stainless steel	1.4404 Acid-prof steel
Impeller	1.4308 Stainless steel	1.4408 Acid-prof steel

Vacuum pump

LPHX

LPH 40106/40411/40516



Dimensions

Size	a	m1	m2	o3	Weight
40106	144	258	204	431	55

Connections

Connection	Designation
UB	Service fluid G 1/2
Ue	Drainage G 1/8
Use	Dirt drainage G 1/8
UI	Air vents G 1/2
Um	Pressure sensor G 1/4
Um1	Drain/ level sensor G1/4

Service fluid in m³/h

Pressure mbar	in	150	400	600	900
40106		0,8	0,65	0,4	0,2
Total service fluid by installation where the fluid is directed straight in to the drain. For other installations ask Armatec					