

Vacuum pump

LPHX

LPH 11055

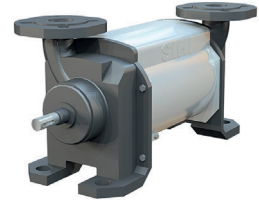
Capacity 200-800m ³ /h	Pressure range 120-1013mbar	Material Cast iron & Stainless steel
---	---------------------------------------	--

Description

A one stage liquid ring vacuum pump with a simple, robust construction. With a free shaft end all options of shaft coupling, motor and DIN seals are available to adapt the pump to your industry.

Range of application

Evacuation and pumping of dry gases and saturated steam. Typical industries are chemical, pharmaceutical, food, plastic and rubber industry. Vacuum is used for distillation, drying, degassing, filling and boiling.



AT 6300

Design

The pump works according to the liquid ring principle. Fluid pumps are in some regards related with displacement pumps since the pump wheel is eccentrically located in the round pump body. When the wheel is rotating a fluid ring is created along the pump body's inner wall. In the cells (the space between the pump body's wings) inside the fluid ring rising part volumes (intake) and then decreasing volumes (outlet) will be created under one rotation.

Material combinations

Pos	02	42
Casing	0.6025 Cast iron	1.4408 Acid-proof steel
Central body	1.0038 Steel	1.4571 Acid-proof steel
Guide disc	0.6025 Cast iron	1.4408 Acid-proof steel
Shaft	1.0503 Steel	1.0503 Steel
Impeller	1.0570 Steel	1.4571 Acid-proof steel