

# Vacuum pump

LOHE

LOH K 20103/20107

<b>Capacity</b> 2,7-6,1 m <sup>3</sup> /h	<b>Pressure range</b> 80-1013mbar	<b>Material</b> Cast iron & Bronze
--	--------------------------------------	---------------------------------------

## Descriptions

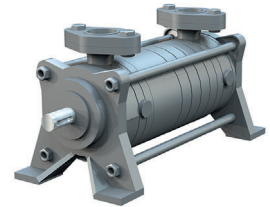
A two stage liquid ring vacuum pump with a simple, robust design. With a free shaft end all options of shaft coupling, motor and DIN seals are available to adapt the pump to your industry.

## Range of application

Pumping and compressing of dry gases and saturated vapours; the compressors can also handle liquids. The compressors are applied in all fields where a compression over pressure of up to 2 bar has to be created by robust compressors and only a small increase in temperature is admissible during compression.

Typical industries is chemical, pharmaceutical, food, plastic and rubber industries.

Vacuum is used for distillation, drying, degassing , filling and boiling.



AT 6300-05501

## Design

The compressor works according to the fluid ring principle. Fluid pumps are in some regards related with displacement pumps since the pump wheel is eccentrically located in the round pump body. When the wheel is rotating a fluid ring is created along the pump body's inner wall. In the cells (the space between the pump wheel wings) inside the fluid ring rising part volumes (inlet) and then decreasing volumes (outlet) will be created under one rotation.

## Material combinations

Pos	01	02	42
Casing	0.6025 Cast iron	0.6025 Cast iron	1.4408 Acid-proof steel
Gude disc	0.6025 Cast iron	0.6025 Cast iron	1.4408 Acid-proof steel
Impeller	RG9	1.4027.05 Stainless steel	1.4517 Acid-proof steel
Central body	1.0570 Steel	1.0570 Steel	1.4581 Acid-proof steel
Shaft	1.4021 Stainless steel	1.4021 Stainless steel	1.4401 Acid-proof steel