

Vacuum pump

LEMA, LEMB

LEM 25/50

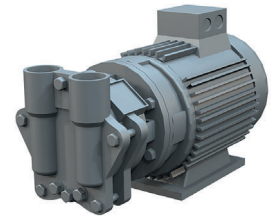
| | | |
|---|---------------------------------------|------------------------------|
| Capacity 4-60 m ³ /h | Pressure range 33-1013 mbar | Material Cast iron |
|---|---------------------------------------|------------------------------|

Description

A one stage liquid ring vacuum pump in OEM construction.
Close coupled pump where the motor is mounted directly on the pump casing to take up as little space as possible when the pump is mounted in the system.

Range of application

Evacuation and pumping of dry gases and saturated steam.
Typical industries are chemistry, pharmaceutical, food, plastic and rubber industry.
Vacuum is used for distillation, drying, degassing, filling and boiling.



AT 6300-25

Design

The pump works according to the liquid ring principle. Fluid pumps are in some regards related with displacement pumps since the pump wheel is eccentrically located in the round pump body. When the wheel is rotating a fluid ring is created along the pump body's inner wall. In the cells (the space between the pump body's wings) inside the fluid ring rising part volumes (intake) and then decreasing volumes (outlet) will be created under one rotation.

Product key (example LEMA 26 AZ AA1 4B 7 1A)

| Pos | Description | Code | Explanation |
|-------|--------------|----------------|--|
| 1-3 | Pump model | LEM | Liquid ring vacuum pump |
| 4 | Construction | A,B | |
| 5-7 | Pump size | 25-425 | |
| 8 | Hydraulics | A,8 C,9 | Threaded inlet/outlet Flanged inlet/outlet |
| 9 | Bearings | Z | Motor bearings |
| 10-12 | Sealing | AAE AA1 | Mechanical sealing SIHI FN EBPGG Mechanical sealing SIHI FN GBVGG |
| 13-14 | Material | 0A 0K 4B | See table below See table below See table below |
| 15 | Gasket | 0 7 | Fluid sealing O-ring Teflon |
| 16-17 | Motor data | 1A,1B, KW | Depending on motor size |

Only the most common combinations above, for specials Contact Armatec

Material combinations

| Pos | OK |
|---------------|------------------------|
| Vacuum casing | 0.6025 Cast iron |
| Cover | 0.6025 Cast iron |
| Guide disc | 0.6025 Cast iron |
| Valve ball | polyamide A |
| Impeller | 1.4308 Stainless steel |

Connections

| Connections | Designation |
|-------------|--------------------------|
| UB | Service fluid G 1/4 |
| Ue | Drainage G 1/4 |
| Uc | Cavitation protection M5 |

Service fluid in m³/h

| Pressure mbar | in | 33 | 120 | 200 | 400 |
|------------------|----|------|------|------|-----|
| LEM 25 | | 0,26 | 0,26 | 0,26 | 0,2 |

Total service fluid by installation where the fluid is directed straight in to the drain.
For other installations ask Armatec