

Pressure sensor

AT 7760

Dimension range G 1/2	PN 160 bar	Temperature range -10°C to +80°C	Material Stainless steel
---------------------------------	----------------------	--	------------------------------------

Range of Application

For gauging of relative and absolute pressure in gases and fluids.

UBC.32 Sensor for pressure continuous signal 4-20mA.

Quality Assurance

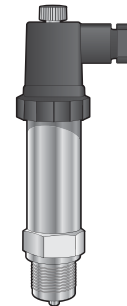
EMC 2004/108/EG

Material Specification

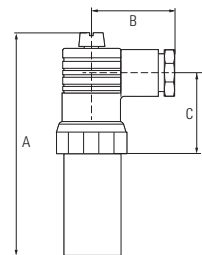
	AT 7760	
1	Coupling head	Polyamide
2	Body	Stainless steel 1.4301
3	Process connection	Stainless steel 1.4404
5	Membrane	Stainless steel 1.4404

Dimension

	AT 7760
A	106
B	39
C	38,5
D	36
E	20
F	G 1/2



AT
7760



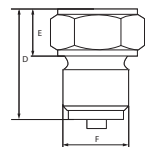
AT 7760

Function and Design

Pressure sensor for general applications within the processing industry. Minimum measuring range relative pressure 0...1 bar and largest 0...160 bar. Minimum measuring range absolute pressure 0...1 bar and largest 0...25 bar. Pressure sensor feels the media pressure with the membrane in stainless steel. This results in an electric output signal 4-20mA that is proportional to the media pressure.

Technical information

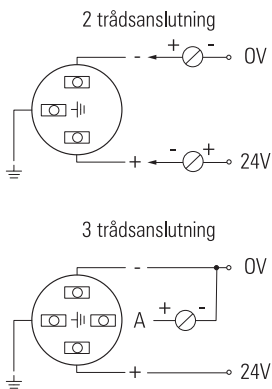
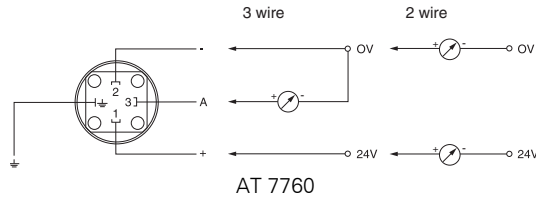
	AT 7760
Supply voltage	24 VDC
Output signal	4-20 mA, 2-wire
Ambient temp.	-25°C to +75°C
Media temp.	-10°C to +80°C
Storage temperature	-40°C to +90°C
Deviation	Max ±0,3% of measuring range
Protection class	IP65 AT 7760, IP67 AT 7761
Adjustability	±5% on zero and span separately
Response time	≤20 ms



Accessories and Options

Other pressure ranges are available area on request. Can be obtained in EEX-performance under EEX ib IIC T6. The transmitter is also available in the performance

of higher process temperatures unless water worm pipe can be used.
Certificate on request. specified when ordering.



Installation

The pressure sensor can be installed in any direction.
Electric installation according to the schematic.
Leader: brown + Green - White grounded

Marking

On the pressure sensor there are markings with the manufacturer's name, CE-marking, measuring range, power supply, output signal and serial number.

How to order

AT 7760-10		
AT 7760	-10	EX
Article no.	Pressure range (bar)	Option
AT 7760, 7761	-1 -2,5 -6 -10 -16 -25 -40 -60 -100	
Pressure range bar	0-1 0-2,5 0-6 0-10 0-16 0-25 0-40 0-60 0-100	
Max. pressure bar	3 10 60 60 60 60 100 200 200	