

Couplings, fittings, check valve

For water gauge

AT 7055-7059, 7076-7079,
7590

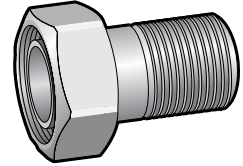
Internet_Variants

Range of application

Gauge accessories

For installation of water meter.

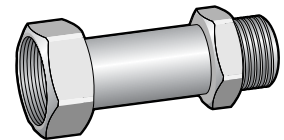
Loose water gauge couplings should only be used in the case where mounting the water meter console isn't possible.



AT 7056

Couplings AT 7056/7076/7077

Designation	For meter		Connection	Build length in mm	Approved for		AT no	RSK-no
	size Q ₃ /Q _p	DN			kvm	vvm		
Short water meter including fiber packing	2,5/1,5	15	G15*G20	40	x	x	7056A15	198 12 32
Ditto	4/2,5	20	G20*G25	50	x	x	7056-20	198 12 65
Ditto	10/6	25	G25*G32	60	x	x	7056-25	198 12 73
Ditto	16/10	40	G40*G50	70	x	x	7056-40	198 13 07
Press couplings	1,5/0,6	15	15xG20		x	x	7056PR15-15	
Ditto	2,5/1,5	15	18xG20		x	x	7056PR15-18	
Ditto	4/2,5	20	22xG25		x	x	7056PR20-22	
Complete inlet coupling for VM-Console AT 7358	4/2,5	20	G20xG25	60	x	x	7076-20A	
Ditto	10/6	25	G25xG32	65	x	x	7076-25A	
Ditto	16/10	40	G40xG50	85	x	x	7076-40A	
Complete adjustable outlet coupling for AT 7358-190	4/2,5	20	G20xG254	80-105	x	x	7077-20A	
Ditto for AT 7358-220	4/2,5	20	G20xG25	95-130	x	x	7077-20A-1	
Ditto for AT 7358-260	10/6	25	G25xG32	110-130	x	x	7077-25A	
Ditto for AT 7358-300	16/10	40	G40xG50	130-155	x	x	7077-40A	



AT 7057

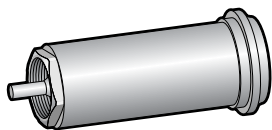
Low water meter coupling AT 7057

Designation	For gauge		Thread		Total length in mm	Approved for		AT no	RSK-no
	size q ₃	DN	externally*	Internally		kvm	vvm		
Low water meter coupling incl. fiber packing AT 7068	4	20	G20*G25		80	x	x	7057-20	198 14 20
	10	25	G25*G32		85	x	x	7057-25	198 14 30
	16	40	G40*G50		90	x	x	7057-40	198 14 63

Couplings, fittings, check valve

For water gauge

AT 7055-7059, 7076-7079,
7590



AT 7079

Adjustable check valve AT 7079

Designation	For gauge		Approved for			
	size q ₃	D N	kvm	vvm	AT no	RSK-no
Adjustable check valve for AT 7058-190BV.						
The sleeve can be replaced afterwards for all standard models of consoles Ditto, for AT 7358-220BV (Check valve sleeve with	4	2 0	x	x	7079-20BV	518 35 40
long stroke length for combined meter build length 190-220 mm.)	4	2 0	x	x	7079-20BV-1	518 35 41
Ditto, for AT 7358-260BV	10	2 5	x	x	7079-25BV	518 35 42
Ditto, for AT 7358-300BV	16	4 0	x	x	7079-40BV	518 35 43

Extension piece AT 7055

Designation	For meter size q ₃	Thread		Total length in mm	Approved for			
		DN	externally*internally		kvm	vvm	AT no	RSK-no
30 mm extension piece with O-ring sealing in EPDM.	4	20	G25*G25	30	x	x	7055-20	520 80 87

Installation box for WS/WP cold water gauge

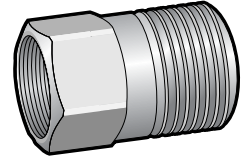
Designation	Build length	Connection dimen- sion	Connection type	AT no
Installation box for WS/WP	330 ±40 mm	DN 50	Flanged	7055-50- 330
	400 ±60 mm	DN 80	Flanged	7055-80- 400
Cold water meter	440 ±60 mm	DN 100	Flanged	7055-100- 440
	500 ±60 mm	DN 150	Flanged	7055-150- 500

Rätten till ändringar utan föregående meddelande förbehålls.
Armatec ansvarar inte för eventuella tryckfel eller missförstånd.
Dokumentet får kopieras endast i sin helhet.

Couplings, fittings, check valve

For water gauge

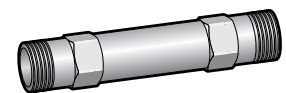
AT 7055-7059, 7076-7079,
7590



AT 7055

Transmission piece AT 7055

Designation	For gauge size q_n	D N	Thread externally*internally	Total length in mm	Approved for		
					kv	vv	AT no
Transition piece for mounting of meter with G20 connection, build length 110 mm, 2 gives connection G25 and build length 130 mm. (mounted with gasket AT 7068-15)	0,6-1,5	2 0	G25xG20	130	x	x	7055R20-R25
Ditto but gives 190 mm build length	0,6-1,5	2 0	G25xG20	190	x	x	7055R20-R25-190
Transmission piece for mounting in q_n 2,5 gauge, build length 190 mm by q_n 10 meter location. 2st ger ansl. G32, (monteras med packning AT 7068-20F)	2,5	2 0	G32xG25	260	x		7055R25-R32
Transmission piece for mounting in q_n 2,5 meter, build length 190 mm by q_n 10 meter location. 2 gives connection G50, 300 mm build length (mounted with gasket AT 7068-20F)	2,5	2 0	G50xG25	300	x		7055R25-R50
Transmission piece for mounting in q_n 5-6 meter, build length 260 mm by q_n 10 meter location. 2 gives connection G50, 300 mm build length (mounted with gasket AT 7068-25)	5-6	3 2	G50xG32	300	x		7055R32-R50



AT 7590

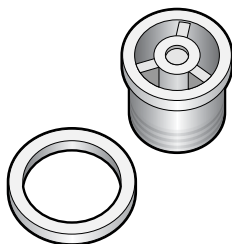
Spud AT 7055/7590

Designation	For meter size q_3	DN	Thread	Total length in mm	Approved for		
					kv	vv	AT no
Spud in acetal GW plastic, to replace meter in console during build time	4	20	G25	190	x		7055-190
Ditto, made in galvanized steel	4	20	G25	190	x	x	7590P20-190
Ditto	10	25	G32	260	x	x	7590P25-260
Ditto	16	40	G50	300	x	x	7590P40-300
	Q_p						
Ditto, made in black steel for heating gauge	0,6-1,5	15	G20	110		x	7590P15-110
Ditto	2,5	20	G25	130		x	7590P20-130

Couplings, fittings, check valve

For water gauge

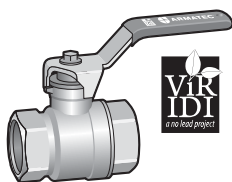
AT 7055-7059, 7076-7079,
7590



AT 7059

Check valve AT 7059

Benämning	For gauge		Quantity per packaging	Approved for		
	size q ₃	DN		kvm	vvm	AT no
Check valve for insertion in the water meter's outlet including special packing, for max 90°C SITAC approval	4	20	25	x	x	7059A20
	10	25		x	x	7059M25
	16	40		x	x	7059M40



AT 3700

Ball valve AT 3700

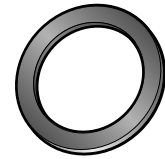
Designation	For gauge		Connection	Total length in mm	Approved for		
	size q ₃	D N			kvm	vvm	AT no
Ball valve in straight performance Internally threaded in both ends. With chrome plated ball with Teflon sealing. Body in "lead free" brass. Standard performance for cold/warm tap water.	4	2	G20*G20	58	x	x	3700-20
		2					
Suitable for installation of water meter console.	10	5	G25*G25	67	x	x	3700-25
		4					
Ditto, DN 25	16	0	G40*G40	94	x	x	3700-40
		0					
Ditto, DN 40							

Rätten till ändringar utan föregående meddelande förbehålls.
Armatec ansvarar inte för eventuella tryckfel eller misstänksänd.
Dokumentet får kopieras endast i sin helhet.

Couplings, fittings, check valve

For water gauge

AT 7055-7059, 7076-7079,
7590



AT 7055

Gaskets / O-rings

Designation	Material	For gauge size q ₃	Dimensions		Approved for		
			D N in mm		kvm	vvm	AT no
Compression gasket for adjustable check valve sleeve AT 7058-190/220	NBR-rubber	4	2 0	30x24x4	x	x	7063-20
Ditto, for AT 7058-260	NBR-rubber	10	2 5	39x30x4	x	x	7063-25
Ditto, for AT 7058-300	NBR-rubber	16	4 0	56x47x5	x	x	7063-40
O-ring for extension piece AT 7055-20	EPDM-rubber	4	2 0		x	x	7065-20
Flat gasket for water meter coupling	Impregnated läder	4	2 0	29x23x3	x		7066-20
			2 5	38x29x3	x		7066-25
			4 0	55x43x3,5	x		7066-40
Flat gasket for water meter, thin	Plastic	4	2 0	30x23x2	x		7067A20
			2 5	38x29x2	x		7067-25
			4 0	55x43x2	x		7067-40
Flat gasket for water meter, thick	Plastic	4	2 0	30x23x4	x		7067-20-4
			2 5	38x29x4	x		7067-25-4
			4 0	55x43x4	x		7067-40-4
Special gasket for extension piece AT 7055-55/85/-115	Fiber (asbestos free)	4	2 0	30x23x3	x	x	7068-20F
Flat gasket for warm and hot water, max 130 degrees (green/white)	Fiber (asbestos free)	Q _p 0,6-1,5	1 5	24x17x2	x	x	7068-15
			2 0	29x23x3	x	x	7068-20
			2 5	38x29x3	x	x	7068-25
			4 0	55x43x3	x	x	7068-40
			Q ₃ 0	55x43x3	x	x	7068-40
Flat gasket to water meter console, thin	NBR-rubber	4	2 0	30x23x2	x	x	7069-20-2
			2 5	38x29x2	x	x	7069-25
			4 0	55x43x3	x	x	7069-40
Flat gasket to water meter console, thick	NBR-rubber	4	2 0	30x23x3	x	x	7069-20
			2 5	38x29x3	x	x	7069-25-3