

# Pressure Gauge

Class 2,5

AT 4258

Dimension	PN	Temperature range	Material
G 1/4 - G 3/8	Full scale value for temporary load	-20 °C to +60 °C	Plastic

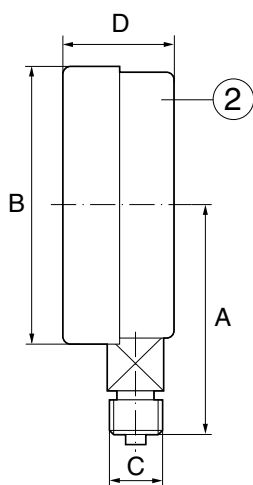
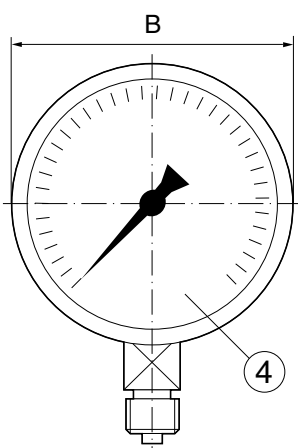
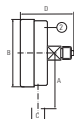
## Range of Application

For measuring the pressure of liquefied or gaseous non-aggressive media, primarily water, air and steam.

## UGC.31 Pressure gauge

Pipe-mounted, with analogue display of instantaneous value. Pressure gauges AT 4258 of Bourdon tube type. Class 2.5, husdiameter 62 mm, graded 0 -.... bar / Pascal.





## Quality Assurance

PED, AFS 1999:4

## Material Specification

	AT 4253	AT 4257	AT 4258
	Bourdon		
1	tube	copper alloy	copper alloy
2	Hus	black plastic ABS	black plastic ABS
3	Mätverk	copper alloy	platinum brass
4	Glas	acrylic glass	acrylic glass
Parts in contact with media is made of copper alloy			

## Dimensions

	AT 4258
A	-
B	62
C	G 1/4
D	29 (with connection pin 47)
Measurement in mm.	

## Function and Design

The pressure gauge is a bourdon tube type, which involves a circle-formed tube spring with an oval cross-section. The system pressure internally affects the bourdon tube so that it, at a certain pressure tends to straighten out. The free end of the bourdon tube moves proportionally with the internal pressure. This movement is then converted by the measuring element into a movement/indication value on the dial.

## Technical Information

	AT 4258
Media temperature	-20°C to +60°C
Ambient temperature	-20°C to +60°C
Accuracy class	2,5%
Effect of temperature	0,4%/10°C (over and under 20°C)
IP class	54
Max. working pressure	75% of the scale value at resting load. 66% of the scale value at fluctuating loads.

## Dimensioning

The scale range should be selected in accordance to the constant pressure that not should exceed 2/3 of the scale range.

## Accessories and Options

For complete pressure gauges sets including control pressure gauge valve, water trap pipe and and pressure gauge valve, please see our AT 1800-1806 product sheet. The pressure gauges are also available in damping fluid-filled, in stainless steel and with non-standard gradings upon request.

# Pressure Gauge

Class 2,5

AT 4258

## Installation

The pressure gauges are to be mounted so that they are both easy to read and protected against vibrations, heat, cold and high air humidity. For high fluid temperatures, a water trap pipe should be used. For pressure variations and vibrations, a damping fluid-filled pressure gauge should be used.

## Marking

The products are marked with Armatec, class and grading.

## How to order

**Example: AT 4258-8-2,5**

<b>AT 4258</b>	<b>-</b>	<b>10</b>	<b>2,5</b>
Article no. AT 4258=bodydiam. 62 mm, back tap	Execution - = standard D = damping fluid-filled U = decompression	Connection -8	Grading