

Ball valve

Full bore

AT 3507, 3527

Internet_Variants

Dimension range	PN	Temperature range	Material
DN 8-150	10/100	-50°C to + 200 °C	Stainless steel

Range of Application

Shut-off valve mainly for:

- Caustic solutions, acid and saline solutions
- Solvents and alcohols
- LPG, natural gas and petroleum products.
- Warm and cold water, compressed air.
- Saturated steam (see pressure-temperature table)

Program text

PSB.1 Ball Valves

Ball valve Stainless Steel AT 3507 ..., with full bore, weld ends and stainless steel lever. Gasket box of graphite.

Ball valve Stainless Steel AT 3527 ..., with full bore, internal threads and stainless steel lever. Gasket box of graphite.



Quality Assurance

Tested according to SS-ISO 5208. Leakage class 3 applies to this valve type.

The valves are approved by TA-luft, and fulfil the requirements in EGN94 for combustible gases, maximum 4 bar(e).

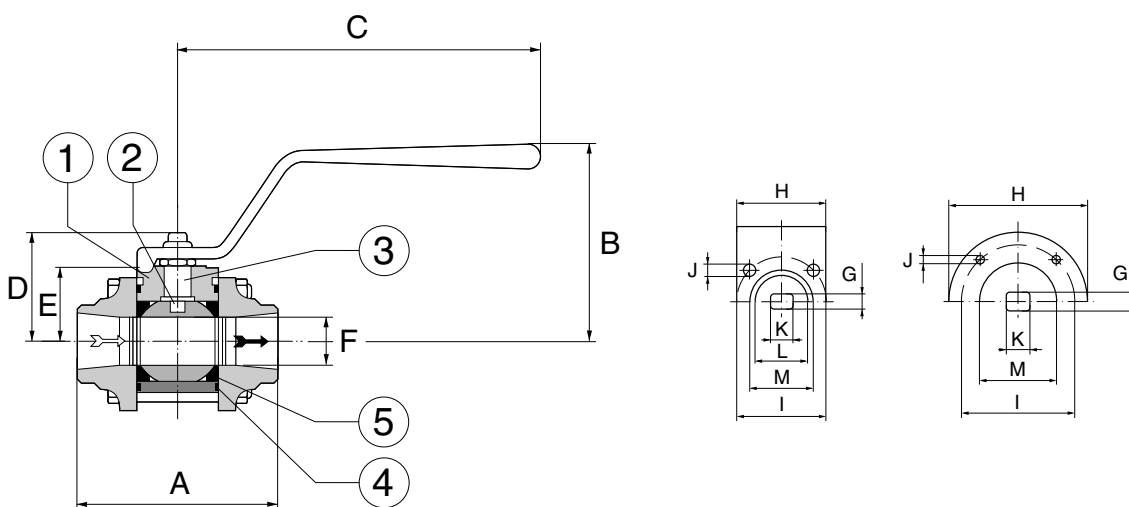
Certificate SS-EN 10204, type 2.2 and 3.1, has to be specified when ordering.

CE-marking

The valves meet the requirements of PED, AFS 2016:1 acc. to category III group 1 and 2. Dimensions to DN 25 satisfies § 8 of the PED, AFS 2016:1.

Surface

Standard surface finish from 3.1 to 6.3 μm for body & ball. Finer surface finish on request.



Ball valve

Full bore

AT 3507, 3527

Material specification

Components		AT3507/3527	
1	Body	Stainless steel 1.4404 / 1.4408	
2	Ball	Stainless steel 1.4404	
3	Stem	Stainless steel 1.4404	
4	Body gasket	PTFE	
5	Seat ring*	PTFE	
6	Stem gasket	PTFE, glass-reinforced	
7	Box gasket	PTFE, carbon-filled and glass-reinforced	
8	Centering ring	PTFE, glass-reinforced	DN65-150 DN200-250
9	End piece	Stainless steel 1.4404	
10	Lever	Steel/epoxi coated	

*Seat in high temperature performance, carbon-filled (25%) PTFE, additional designation HT. Seat rings in different material on request.

Dimension and weight, full bore AT 3507, 3527

DN	15	20	25	32	40	50	65	80	100	125	150
A	72,5	85,4	99,3	110,4	126,3	142,6	169,5	214	277	307	409
B	100	120	125	135	140	150	154	169	183	183	262
C	145	185	185	200	200	250	480	480	480	480	720
D	42	53	58	71	76	86	153	168	182	182	258
E	32	38	36	42	46	70	99	114	128	128	186
F	14,2	20,6	25,4	31,7	38	50	62	82,4	100	100	150
G	5,4	7,5	7,5	8,9	8,9	8,9	19	19	19	19	28,5
H	36	42	41,5*	48,5*	54	70	90	125	125	125	150
I	36	42	42	50	50	70	70	102	105	102	125
J	M5	M5	M5	M6	M6	M8	M8	M10	M10	M10	M12
K	9,5	11	11	14,3	14,3	14,3	22,5	22,5	22,5	22,5	35
L	22	25	25	30	30	45	-	-	-	-	-
M	25	30	30	35	35	55	55	70	70	70	85
ISO flange	F03	F04	F04	F05	F05	F07	F07	F10	F10	F10	F12
Weight	0,8	1,3	1,8	2,8	3,8	7,0	12,0	21,0	35,0	40,0	85,0

Measurements in mm, weight in kg.

Function and Design

Three-piece ball valve in antistatic design for simple service and maintenance. No disassembling or changing of gaskets is necessary when the valve is welded in.

Homogenous floating ball for tight shut-off and low pressure drop.

Self-compensating stem packing gives a tight valve also with high operation frequency.

The design with blow-out safe stem prevents the stem to blow out at pressure hammer.

Mounting flange according to ISO 5211 for actuators.

No dismantling of valve at service and maintenance.

Valves from DN50 have round body and end piece.

Rätten till ändringar utan föregående meddelande förbehålls.
Armatec ansvarar inte för eventuella tryckfel eller missförstånd.
Dokumentet får kopieras endast i sin helhet.

Ball valve

Full bore

AT 3507, 3527

Pressure and temperature full bore

Pressure and temperature, valves with full bore 3507, 3527

DN		15-25	32-40	50-80	100-200
Max. working pressure bar(e)*		100	70	50	40
Working temperature °C*	Standard	200	200	200	200
	High temperature (HT)	250	250	250	250

Pressure and temperature acc. to applied standards. Note that the pressure- and temperatures above is not related.*See also pressure and temperature graph.

Torque

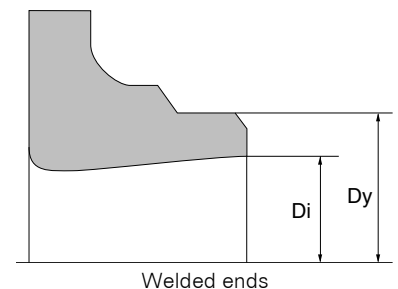
Torque by dP 25 bar

DN	10	15	20	25	32	40	50	65	80	100	125	150	200
Nm	5	6	11	18	24	30	78	120	180	250	180	420	840

For cavity filled valves and other seat materials please add 20% to the torque above. Cryo seats decreases the torque by 50% under room temperature, but it increases by 50% under low temperatures, like 196 °C.

Kv-value

DN	8	10	15	20/ 15	25/ 30	32/ 25	40/ 32	50/ 40	65/ 50	80/ 65	100/ 80	125/ 100	150/ 125	200/ 150	250/ 200
Kvs	8	8	8	13	30	48	80	120	250	470	700	1250	1250	1800	2800



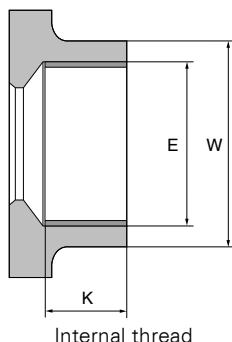
AT 3507 Measurements weld ends

DN	8	10	15	20	25	32	40	50	65	80	100	125	150	200	250
Dy	13,5	17,2	21,3	26,9	33,7	42,4	48,3	60,3	76,1	88,9	114,3	139,7	168,3	219,1	273
Di	9,5	12,6	16,2	20,6	26	32	40	50	65	80	100	125	150	200	260
Material thickness	2,0	2,3	2,55	3,15	3,85	5,2	4,15	5,15	5,55	4,45	7,15	7,35	9,15	9,55	6,5

Ball valve

Full bore

AT 3507, 3527



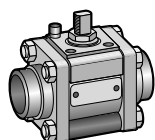
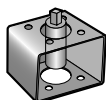
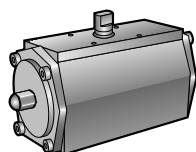
Accessories and Options

Can be provided with different types of actuators and limit switches. (See separate datasheet AT 3830..., AT 3831..., AT 3900...)

The valve is available with different types of accessories and in different performance as:

Stem extension, Cavity filling, spring return lever with spring-to-open or spring-to-close function. Fire-safe design, three-way valves, heating jacket, Cryo performance, double gasket box, tank bottom valve, high pressure performance. Three-piece valves give many variations for connection, for example one weld end and one threaded end.

NPT threads and customer related welded ends.



Installation

Valves with weld ends can be welded in without disassembling, provided that the ball is in the open position. See separate manual.

Maintenance and Spare parts

The valve construction permit a simple exchanging of all parts. See separate installation- and maintenance instructions AT 9980-3502.

Marking

Manufacturer, DN, PN, material, CE and on special valves flow direction arrow.

How to order

DN	AT 3507	AT 3527
	Article No.	Article No.
8		
10	3507-10	3527-10
15	3507-15	3527-15
20	3507-20	3527-20
25	3507-25	3527-25
32	3507-32	3527-32
40	3507-40	3527-40
50	3507-50	3527-50
65	3507-65	3527-65
80	3507-80	
100	3507-100	

How to order cont.

AT3507 = Acid proof steel, weld ends, full bore

AT3527 = Acid proof steel, internal thread, full bore

HT = High temperature performance

FS= Fire-safe

C= Cryogenic

HP = High pressure performance

Rätten till ändringar utan föregående meddelande förbehålls.
Armatec ansvarar inte för eventuella tryckfel eller missförstånd.
Dokumentet får kopieras endast i sin helhet.

Ball valve

Full bore

AT 3507, 3527

G = 15% glass-filled PTFE

GF = 25% glass-filled PTFE

See separate pressure and temperature curves for selection of seat packaging.