

3-DELT KONTRAVENTIL MED GEVINDENDER

TYPE 380



armatec

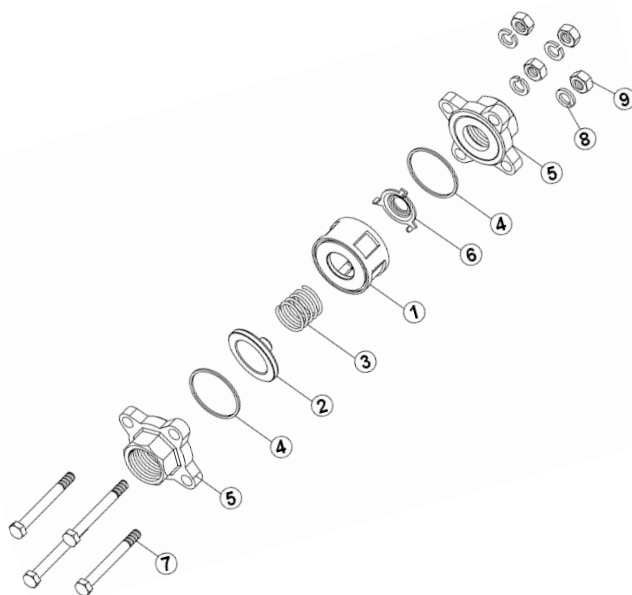


GENERELT

DIMENSION:	1/4" TIL 2"
TRYKTRIN:	PN63
TEMPERATUR:	-20°C TIL 200°C
MATERIALE:	SYREFAST RUSTFRIT STÅL
TILSLUTNING:	GEVINDENDER - BSP

OPTION

OPTION:	2 1/2" TIL 4"
GEVINDENDER:	NPT (TYPE 384)
GODKENDELSER:	EU1935



POS	BESKRIVELSE	MATERIALE
1	HUS	RUSTFRIT STÅL 1.4408
2	KLAP	RUSTFRIT STÅL AISI 316
3	FJERDER	RUSTFRIT STÅL AISI 316
4	PAKNING	PTFE
5	TILSLUTNINGSENDE	RUSTFRIT STÅL 1.4408
6	BØSNING	RUSTFRIT STÅL AISI 316
7	BOLT	RUSTFRIT STÅL A2-70
8	SKIVE	RUSTFRIT STÅL AISI 304
9	MØTRIK	RUSTFRIT STÅL A2-70

BESKRIVELSE

- **3-delt konstruktion** for nem inspektion og udskiftning af midterpart.
- **Fjederpåvirket klap** muliggør montering i alle retninger.
- **Materiale certifikat EN10204/3.1** foreligger, da der er sporbarhed på alle kontraventiler.

VELEGNET TIL



INDUSTRI



VANDVÆRKER



VARMEANLÆG



KØLEANLÆG



DAMP

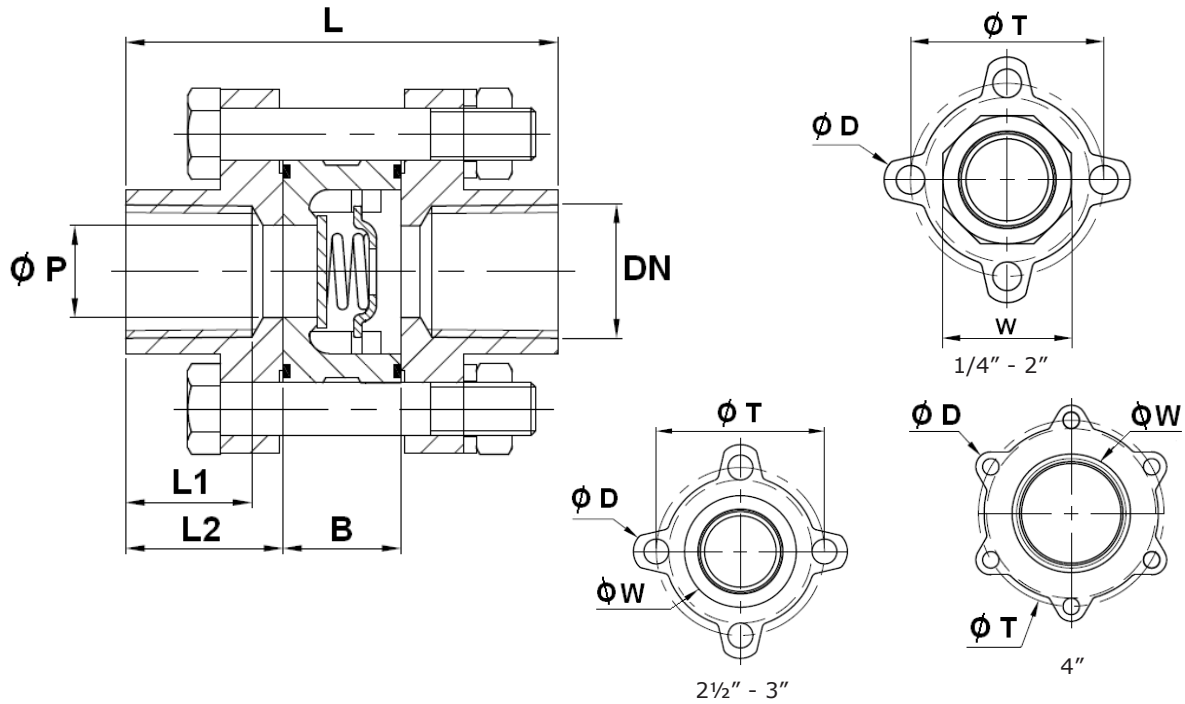


BIOGAS



FØDEVARER

DIMENSIONER

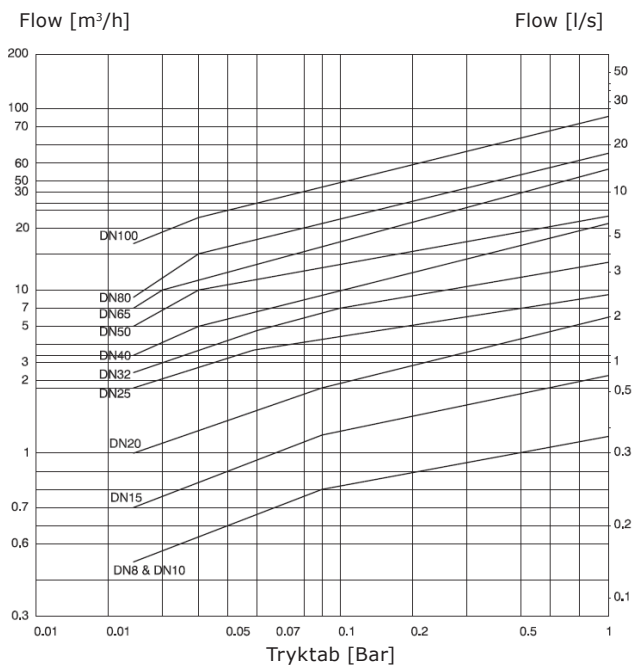


DIM [TOMME]	Ø P [MM]	L [MM]	L1 [MM]	L2 [MM]	B [MM]	Ø D [MM]	Ø T [MM]	W [MM]	VÆGT [KG]
1/4"	10,0	60,0	16,0	21,0	18,0	12,0	36,5	22,0	0,3
3/8"	10,0	60,0	16,0	21,0	18,0	12,0	36,5	22,0	0,2
1/2"	14,0	63,0	18,0	22,0	19,0	14,0	42,7	26,0	0,4
3/4"	19,0	71,0	20,0	23,5	24,0	16,0	51,7	32,0	0,5
1"	25,0	81,5	20,0	26,0	29,5	16,0	58,7	39,0	0,7
1 1/4"	31,0	91,0	23,0	29,0	33,0	18,0	72,7	49,0	1,3
1 1/2"	39,0	97,5	23,0	30,0	37,5	18,0	83,7	56,0	1,7
2"	49,0	117,0	27,0	35,0	47,0	18,0	98,7	69,0	2,5
2 1/2"	64,0	131,5	33,0	42,0	47,5	18,0	129,0	83,0	4,3
3"	78,0	143,5	35,0	44,0	55,5	18,0	153,5	100,0	6,2
4"	97,0	174,5	45,0	52,0	70,5	18,0	186,5	122,5	11,0

VENTIL DATA

DN	Åbningstryk [mbar]			Kvs [m³/h]
	▲	▼	→	
DN 8	▲ 25	▼ 21	→ 23	1,23
DN 10	▲ 25	▼ 21	→ 23	1,23
DN 15	▲ 25	▼ 21	→ 23	2,24
DN 20	▲ 25	▼ 21	→ 23	6,50
DN 25	▲ 25	▼ 21	→ 23	9,61
DN 32	▲ 27	▼ 21	→ 24	15,89
DN 40	▲ 29	▼ 21	→ 25	22,49
DN 50	▲ 29	▼ 21	→ 25	25,12
DN 65	▲ 31	▼ 21	→ 25	57,80
DN 80	▲ 32	▼ 21	→ 26	64,83
DN 100	▲ 33	▼ 21	→ 27	91,60

TRYKTABSKURVE (MEDIE: VAND 20°)



TRYK / TEMPERATUR

