

3-PCS BALL VALVE - FULL BORE

TYPE DVC7621



armatec

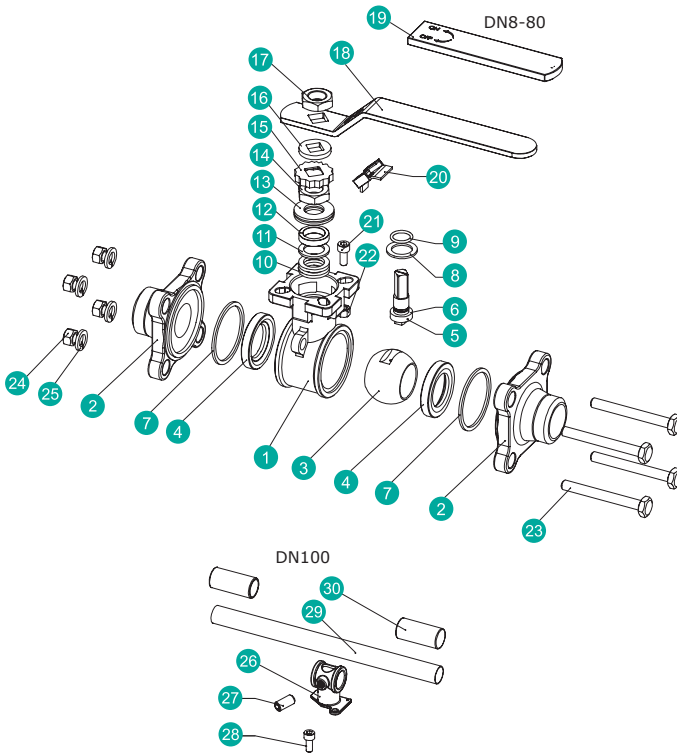


GENERAL

| | |
|---|----------------------|
| DIMENSION: | DN15 - DN100 |
| PRESSURE: | 25 BAR / 400 PSI WOG |
| TEMPERATUR: | -29°C TO 204°C |
| (PRESSURE AND TEMPERATURE ARE INTERDEPENDENT) | |
| ISO TOP FLANGE: | ISO 5211 |
| BUTT WELD ENDS: | ISO 1127 |

OPTION

| | |
|--------------|---------------------|
| SIZE: | DN08 - DN10 |
| THREAD ENDS: | BSPP (TYPE DVC7444) |
| MATERIAL: | STEEL |



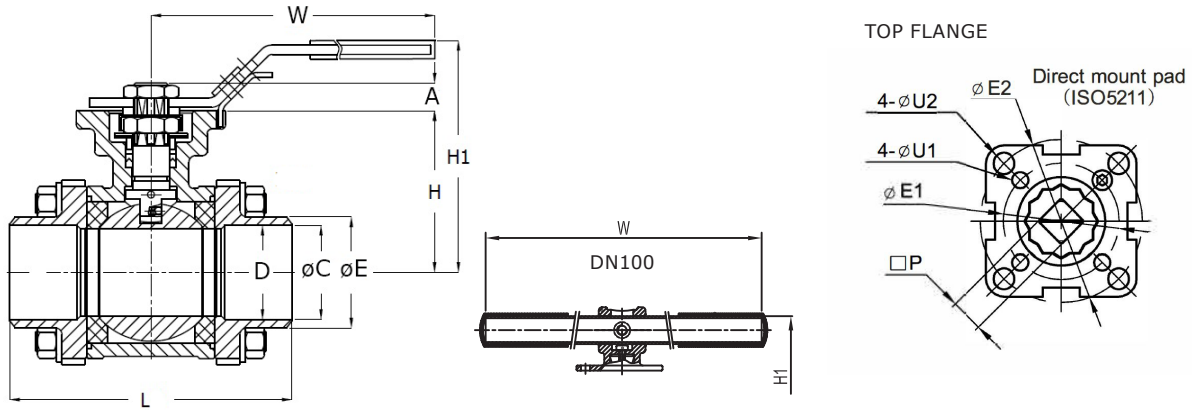
| POS | DESCRIPTION | MATERIAL |
|-----|-------------------|-----------------------------|
| 1 | BODY | STAINLESS STEEL CF8M |
| 2 | END CAP | STAINLESS STEEL CF3M |
| 3 | BALL | STAINLESS STEEL AISI 316 |
| 4 | SEAT | TFM1600 |
| 5 | STEM | STAINLESS STEEL AISI 316 |
| 6 | ANTI-STATIC | STAINLESS STEEL AISI 316 |
| 7 | BODY GASKET | PTFE |
| 8 | THRUST WASHER | PTFE |
| 9 | O-RING | FPM |
| 10 | PACKING | PTFE |
| 11 | BUSHING | 50%SS + 50%PTFE |
| 12 | GLAND | STAINLESS STEEL AISI 316 |
| 13 | BELLEVILLE WASHER | STAINLESS STEEL AISI 301 |
| 14 | STEM NUT | STAINLESS STEEL AISI A194-8 |
| 15 | STOP-LOCK-CAP | STAINLESS STEEL AISI 304 |
| 16 | HANDLE GLAND | STAINLESS STEEL AISI 304 |
| 17 | HANDLE NUT | STAINLESS STEEL A194-8 |
| 18 | HANDLE | STAINLESS STEEL AISI 304 |
| 19 | HANDLE SLEEVE | PVC PLASTIC |
| 20 | LOCKING DEVICE | STAINLESS STEEL AISI 304 |
| 21 | STOP BOLT | STAINLESS STEEL A2-70 |
| 22 | STOP NUT | STAINLESS STEEL A2-70 |
| 23 | BOLTING | STAINLESS STEEL A2-70 |
| 24 | BOLT NUT | STAINLESS STEEL A2-70 |
| 25 | BOLT WASHER | STAINLESS STEEL AISI 304 |
| 26 | HANDLE ADAPTER | A351-CF8 |
| 27 | SET SCREWED | STAINLESS STEEL A2-70 |
| 28 | BOLTING | STAINLESS STEEL A2-70 |
| 29 | HANDLE SLEEVE | A53+ZINC PLATED |

DESCRIPTION

- **Solid industrial ball valve** in acid-proof, stainless steel CF8M and steel WCB. The 3-pcs. design with "build-in flanges" makes it easy to remove the valves middle part for maintenance.
- **Stainless steel weld ends ISO 1127** are standard. Furthermore thread ends in BSPP as option.
- **The Blow-out proof stem**, has apart from a security function also the benefit of increasing the stem sealing when pressure rises.
- **Approvals:** TA-Luft, SIL2, ATEX 2014/34/EC (Ex II 2G Exh IIC T6...T1 Gb and Ex II 2D Exh IIIC T85°C...T450°C Db), EC1935 and FDA.
- **Maintenance free stuffing box** with spring washers, PTFE V-rings and FPM O-ring provides optimum sealing and longer service life. The stuffing box will self-adjust under changing temperatures and due to wear.
- **Electric equalizer connections**, between ball, stem and body makes it possible to install this valve type in ATEX area (Group II, equipment category 2).
- **Traceability on all ball valves**, and delivery of material certificate EN 10204/3.1 on request.
- **ISO 5211 top flange** makes it simple and easy to mount an actuator without bracket and coupling. A compact solution with less connections = less slack.

DS-DVC7621-UK-01-2025-REV. A
We reserve the right for changes.

DIMENSIONS



| DIMENSION | | VALVE WITH HANDLE | | | | ISO TOP FLANGE | | | | | STEM | |
|-----------|--------|-------------------|-------|-------|-------|----------------|-----------|--------------|--------------|----------|------|------|
| [MM] | [INCH] | L | H | H1 | W | $\phi E1$ | $\phi E2$ | 4x $\phi U1$ | 4x $\phi U2$ | ISO 5211 | P | A |
| | | [MM] | [MM] | [MM] | [MM] | [MM] | [MM] | [MM] | [MM] | | [MM] | [MM] |
| DN15 | 1/2" | 75.0 | 42.0 | 72.0 | 147.0 | 36 | 42 | 6 | 6 | F03/F04 | 9 | 9.0 |
| DN20 | 3/4" | 90.0 | 48.5 | 79.0 | 147.0 | 36 | 50 | 6 | 7 | F03/F05 | 9 | 9.0 |
| DN25 | 1" | 100.0 | 58.5 | 89.0 | 177.0 | 42 | 50 | 6 | 7 | F04/F05 | 11 | 11.0 |
| DN32 | 1 1/4" | 110.0 | 63.0 | 93.0 | 177.0 | 42 | 70 | 6 | 9 | F04/F07 | 11 | 11.0 |
| DN40 | 1 1/2" | 125.0 | 71.3 | 103.0 | 197.0 | 50 | 70 | 7 | 9 | F05/F07 | 14 | 14.0 |
| DN50 | 2" | 150.0 | 78.2 | 110.0 | 197.0 | 50 | 70 | 7 | 9 | F05/F07 | 14 | 14.0 |
| DN65 | 2 1/2" | 190.0 | 100.0 | 150.0 | 267.0 | 70 | 102 | 9 | 11 | F07/F10 | 17 | 17.0 |
| DN80 | 3" | 220.0 | 108.5 | 159.0 | 267.0 | 70 | 102 | 9 | 11 | F07/F10 | 17 | 17.0 |
| DN100 | 4" | 270.0 | 140.0 | 212.0 | 400.0 | - | 102 | - | 11 | F10 | 22 | 22.0 |

VALVE DATA

| DIM | | TORQUE* | WEIGHT | KV-VALUE | BUTT WELD ENDS | MAST** |
|-------|---------|---------|--------|------------|----------------------------------|-----------------|
| [MM] | [TOMME] | [NM] | [KG] | 90° [m³/h] | ISO 1127 $\phi C/\phi E$ (MM) | AISI316 [NM] |
| DN15 | 1/2" | 6.5 | 0.63 | 26 | 21.3/17.3 (2.0) | 15 |
| DN20 | 3/4" | 7.8 | 0.91 | 47 | 26.9/22.9 (2.0) | 15 |
| DN25 | 1" | 14.3 | 1.35 | 83 | 33.7/29.7 (2.0) | 36 |
| DN32 | 1 1/4" | 20.8 | 2.08 | 146 | 42.4/38.4 (2.0) | 36 |
| DN40 | 1 1/2" | 29.9 | 2.97 | 232 | 48.3/44.3 (2.0) | 91 |
| DN50 | 2" | 42.9 | 4.30 | 404 | 60.3/56.3 (2.0) | 91 |
| DN65 | 2 1/2" | 66.3 | 8.50 | 671 | 76.1/72.1 (2.0) | 180 |
| DN80 | 3" | 110.5 | 12.30 | 989 | 88.9/84.9 (2.0) | 180 |
| DN100 | 4" | 166.4 | 23.40 | 1806 | 114.3/110.3 (2.0) | 354 |

* Torque figures include 30% safety factor. (TEST: 30bar diff. pressure, ambient temperature, non-lubricating).

**Max allowed stem torque

PRESSURE/TEMPERATURE

