

# 3-PCS BALL VALVE - FULL BORE

## TYPE DVC7621

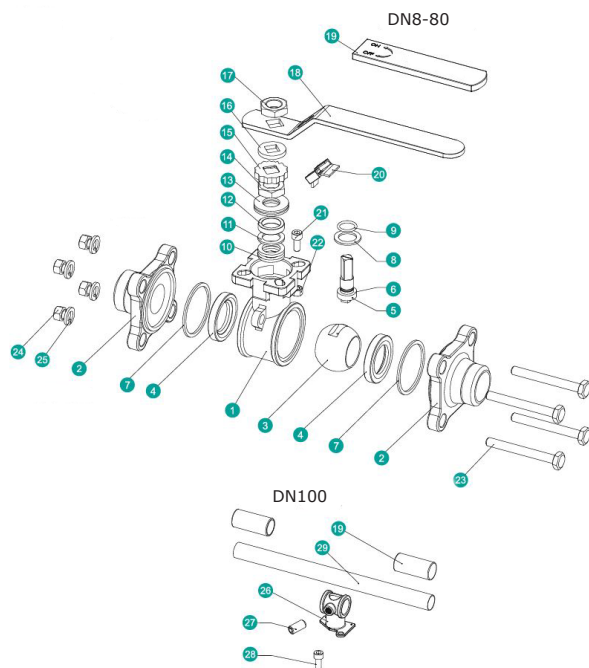


### GENERAL

|   |                      |
|---|----------------------|
| DIMENSION:                                    | DN15 - DN100         |
| PRESSURE:                                     | 25 BAR / 400 PSI WOG |
| TEMPERATUR:                                   | -29°C TO 204°C       |
| (PRESSURE AND TEMPERATURE ARE INTERDEPENDENT) |                      |
| ISO TOP FLANGE:                               | ISO 5211             |
| BUTT WELD ENDS:                               | ISO 1127             |

### OPTION

|              |                   |
|--------------|-------------------|
| SIZE:        | DN08 - DN10       |
| THREAD ENDS: | BSPP (TYPE E7444) |
| MATERIAL:    | STEEL             |

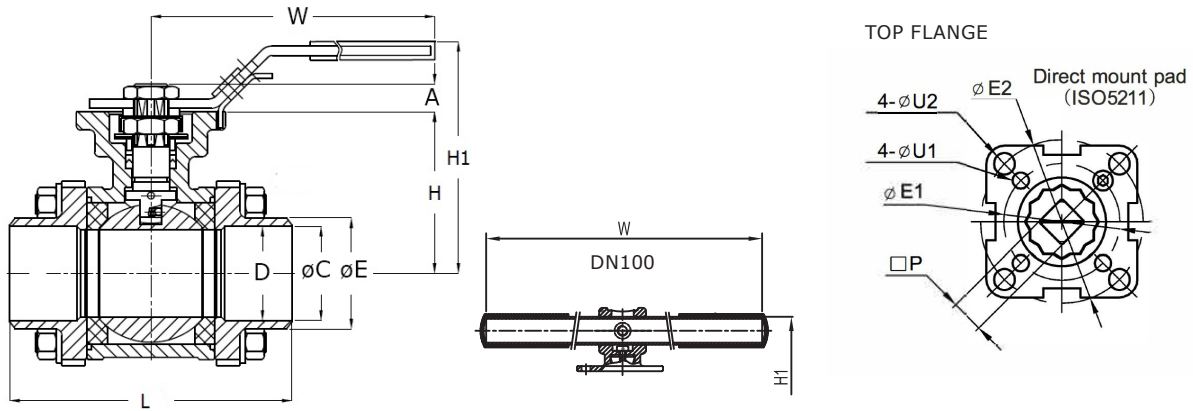


| POS | DESCRIPTION       | MATERIAL                    |
|-----|-------------------|-----------------------------|
| 1   | BODY              | STAINLESS STEEL CF8M        |
| 2   | END CAP           | STAINLESS STEEL CF3M        |
| 3   | BALL              | STAINLESS STEEL AISI 316    |
| 4   | SEAT              | TFM1600                     |
| 5   | STEM              | STAINLESS STEEL AISI 316    |
| 6   | ANTI-STATIC       | STAINLESS STEEL AISI 316    |
| 7   | BODY GASKET       | PTFE                        |
| 8   | THRUST WASHER     | PTFE                        |
| 9   | O-RING            | FPM                         |
| 10  | PACKING           | PTFE                        |
| 11  | BUSHING           | 50%SS + 50%PTFE             |
| 12  | GLAND             | STAINLESS STEEL AISI 316    |
| 13  | BELLEVILLE WASHER | STAINLESS STEEL AISI 301    |
| 14  | STEM NUT          | STAINLESS STEEL AISI A194-8 |
| 15  | STOP-LOCK-CAP     | STAINLESS STEEL AISI 304    |
| 16  | HANDLE GLAND      | STAINLESS STEEL AISI 304    |
| 17  | HANDLE NUT        | STAINLESS STEEL A194-8      |
| 18  | HANDLE            | STAINLESS STEEL AISI 304    |
| 19  | HANDLE SLEEVE     | PVC PLASTIC                 |
| 20  | HANDLE NUT        | STAINLESS STEEL AISI 304    |
| 21  | STOP BOLT         | STAINLESS STEEL A2-70       |
| 22  | STOP NUT          | STAINLESS STEEL A2-70       |
| 23  | BOLTING           | STAINLESS STEEL A2-70       |
| 24  | BOLT NUT          | STAINLESS STEEL A2-70       |
| 25  | BOLT WASHER       | STAINLESS STEEL AISI 304    |
| 26  | HANDLE ADAPTER    | A351-CF8                    |
| 27  | SET SCREWED       | STAINLESS STEEL A2-70       |
| 28  | BOLTING           | STAINLESS STEEL A2-70       |
| 29  | HANDLE SLEEVE     | A53+ZINC PLATED             |

### DESCRIPTION

- **Solid industrial ball valve** in acid-proof, stainless steel CF8M and steel WCB. The 3-pcs. design with "build-in flanges" makes it easy to remove the valves middle part for maintenance.
- **Stainless steel weld ends ISO 1127** are standard. Furthermore thread ends in BSPP as option.
- **The Blow-out proof stem**, has apart from a security function also the benefit of increasing the stem sealing when pressure rises.
- **Approvals:** TA-Luft, SIL2, ATEX 2014/34/EC (Ex II 2G Exh IIC T6...T1 Gb and Ex II 2D Exh IIIC T85°C...T450°C Db), EC1935 and FDA.
- **Maintenance free stuffing box** with spring washers, PTFE V-rings and FPM O-ring provides optimum sealing and longer service life. The stuffing box will self-adjust under changing temperatures and due to wear.
- **Electric equalizer connections**, between ball, stem and body makes it possible to install this valve type in ATEX area (Group II, equipment category 2).
- **Traceability on all ball valves**, and delivery of material certificate EN 10204/3.1 on request.
- **ISO 5211 top flange** makes it simple and easy to mount an actuator without bracket and coupling. A compact solution with less connections = less slack.

## DIMENSIONS



| DIMENSION |        | VALVE WITH HANDLE |       |       |       | ISO TOP FLANGE |      |       |       |          | STEM |      |
|-----------|--------|-------------------|-------|-------|-------|----------------|------|-------|-------|----------|------|------|
| [MM]      | [INCH] | L                 | H     | H1    | W     | øE1            | øE2  | 4xøU1 | 4xøU2 | ISO 5211 | P    | A    |
|           |        | [MM]              | [MM]  | [MM]  | [MM]  | [MM]           | [MM] | [MM]  | [MM]  |          | [MM] | [MM] |
| DN15      | 1/2"   | 75,0              | 42,0  | 72,0  | 147,0 | 36             | 42   | 6     | 6     | F03/F04  | 9    | 9,0  |
| DN20      | 3/4"   | 90,0              | 48,5  | 79,0  | 147,0 | 36             | 50   | 6     | 7     | F03/F05  | 9    | 9,0  |
| DN25      | 1"     | 100,0             | 58,5  | 89,0  | 177,0 | 42             | 50   | 6     | 7     | F04/F05  | 11   | 11,0 |
| DN32      | 1 1/4" | 110,0             | 63,0  | 93,0  | 177,0 | 42             | 70   | 6     | 9     | F04/F07  | 11   | 11,0 |
| DN40      | 1 1/2" | 125,0             | 71,3  | 103,0 | 197,0 | 50             | 70   | 7     | 9     | F05/F07  | 14   | 14,0 |
| DN50      | 2"     | 150,0             | 78,2  | 110,0 | 197,0 | 50             | 70   | 7     | 9     | F05/F07  | 14   | 14,0 |
| DN65      | 2 1/2" | 190,0             | 100,0 | 150,0 | 267,0 | 70             | 102  | 9     | 11    | F07/F10  | 17   | 17,0 |
| DN80      | 3"     | 220,0             | 108,5 | 159,0 | 267,0 | 70             | 102  | 9     | 11    | F07/F10  | 17   | 17,0 |
| DN100     | 4"     | 270,0             | 140,0 | 212,0 | 400,0 | -              | 102  | -     | 11    | F10      | 22   | 22,0 |

## VALVE DATA

| DIM   |         | TORQUE* | WEIGHT | KV-VALUE   | BUTT WELD ENDS         | MAST**          |
|-------|---------|---------|--------|------------|------------------------|-----------------|
| [MM]  | [TOMME] | [NM]    | [KG]   | 90° [m³/h] | ISO 1127<br>ØC/ØE (MM) | AISI316<br>[NM] |
| DN15  | 1/2"    | 6,5     | 0,63   | 26         | 21,3/17,3 (2,0)        | 15              |
| DN20  | 3/4"    | 7,8     | 0,91   | 47         | 26,9/22,9 (2,0)        | 15              |
| DN25  | 1"      | 14,3    | 1,35   | 83         | 33,7/29,7 (2,0)        | 36              |
| DN32  | 1 1/4"  | 20,8    | 2,08   | 146        | 42,4/38,4 (2,0)        | 36              |
| DN40  | 1 1/2"  | 29,9    | 2,97   | 232        | 48,3/44,3 (2,0)        | 91              |
| DN50  | 2"      | 42,9    | 4,30   | 404        | 60,3/56,3 (2,0)        | 91              |
| DN65  | 2 1/2"  | 66,3    | 8,50   | 671        | 76,1/72,1 (2,0)        | 180             |
| DN80  | 3"      | 110,5   | 12,30  | 989        | 88,9/84,9 (2,0)        | 180             |
| DN100 | 4"      | 166,4   | 23,40  | 1806       | 114,3/110,3 (2,0)      | 354             |

\* Torque figures include 30% safety factor. (TEST: 30bar diff. pressure, ambient temperature, non-lubricating).

\*\*Max allowed stem torque

## PRESSURE/TEMPERATURE

