

CATALOG No.
 MANUFACTURING No.
 MAX. WORKING PRESSURE
 FLUID TEMPERATURE

MFG NO. EXAMPLE
 7 22 8
 YEAR
 DAY
 MONTH

1~9: JAN. ~SEP.
 X: OCTOBER
 Y: NOVEMBER
 Z: DECEMBER

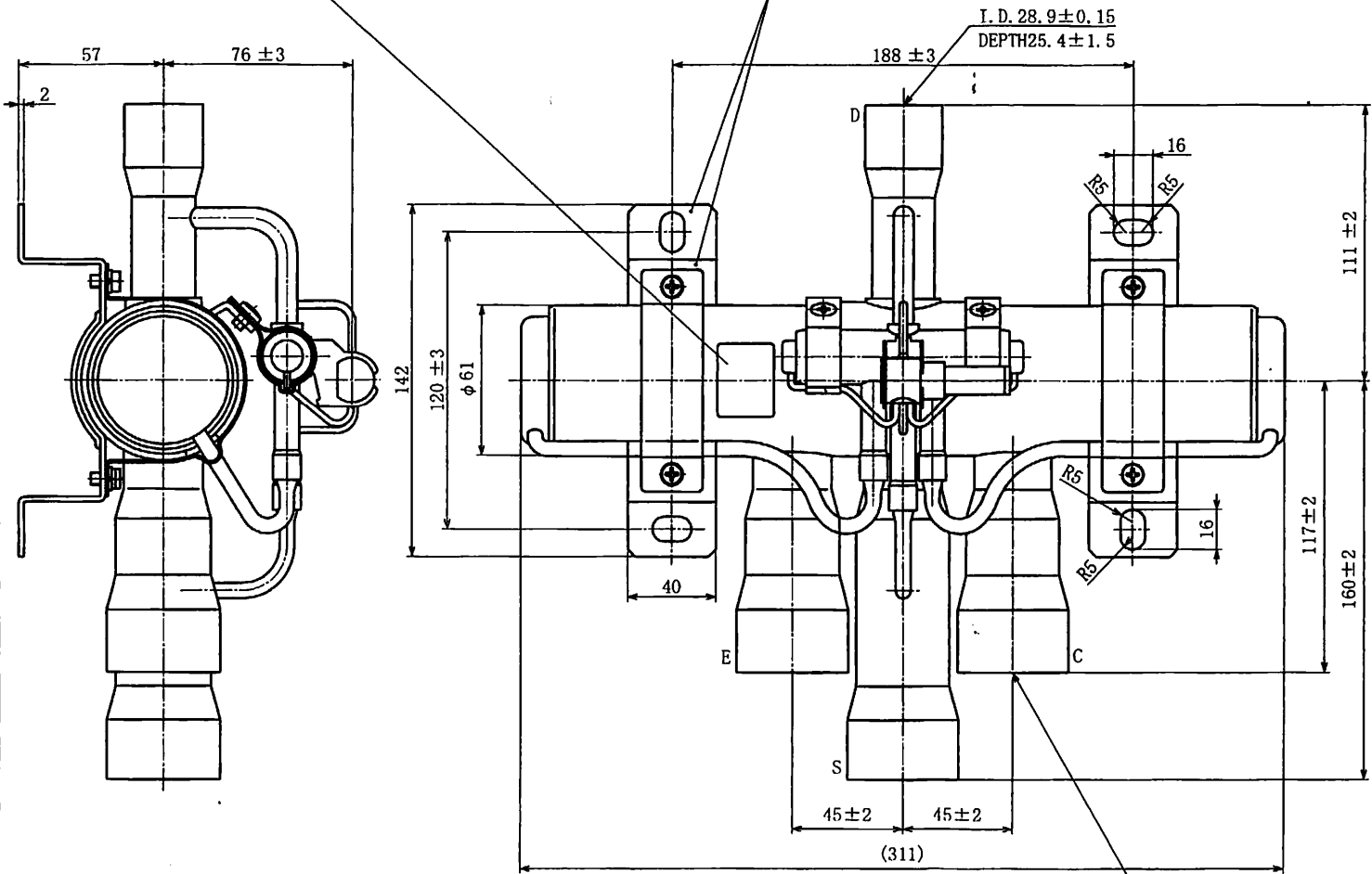
HANDLING NOTICE

- When use the 4-Way Reversing Valves, please check products' adaptability to whole system. If the products could not adapt the whole system, malfunction such as abnormal pressure increase at High Pressure Side and / or incapability of change over, etc will take a place.
- In order to keep temperature of the valve body under 130°C, cooling the valve body with water, or wet waste during brazing the joints. (Be sure not to wet the products inside.) If not cool enough, it may cause of melting of inside resin. Besides foreign matter such as oxidation scale may cause of valve leakage and malfunction.
- When mounting the solenoid coil, the fixing screw must be tightened with 1.47~1.96 N·m torque.
- External force by impact, etc to the valve body will be cause of deformation and malfunction.

SPECIFICATIONS

WATER TEST PRESSURE	WITH WATER PRESSURE	6.44 MPa (64.4 bar)
AIRTIGHT TEST PRESSURE	WITH AIR PRESSURE	4.5 MPa (45.0 bar)
MAX. WORKING PRESSURE		4.5 MPa (45.0 bar)
CONNECTION		ILLUSTRATE
FLUID		R410A
PORT SIZE		28 mm
VALVE OPERATION		PILOT-OPERATED 4-WAY REVERSING VALVE
DURABILITY		10000 TIMES TESTED BY AIR PRESSURE UNDER DISCHARGE PRESSURE 2.5 MPa (25 bar) SUCTION TUBE OPEN TO ATMOSPHERE AND BODY TEMP. NORMAL TEMPERATURE (LUB. OIL APPLIED DURING THE TEST)
MAX. OPERATING PRESS. DIFFERENTIAL		3.1 MPa (31 bar)
MIN. OPERATING PRESS. DIFFERENTIAL		0.3 MPa (3 bar)
VALVE LEAKAGE		10000 cm ³ /min. OR LESS WITH AIR UNDER 0. P. D. 1 MPa (10 bar) AND BODY TEMP. NORMAL TEMPERATURE BUT 15000 cm ³ /min. OR LESS AFTER THE DURABILITY TEST.
CAPACITY		52 ~ 94 kW
MIN. OPERATING VOLTAGE *1		85% OR LESS OF RATED VOLTAGE AT ΔP 2.5 MPa (25 bar)
AMBIENT TEMPERATURE		-20 ~ +55 °C
ALLOWABLE FLUID TEMPERATURE		-20 ~ +130 °C
MAX. ALLOWABLE TEMPERATURE		130 °C

BRACKET FOR FIXING BODY



MOUNTING POSITION



AVAILABLE TO INSTALL IN ANY POSITIONS WITH THE BODY AXIS HOLD HORIZONTALLY. 180°
 AVAILABLE TO INSTALL IN ANY POSITIONS WITH THE BODY AXIS VERTICALLY AND THE SOLENOID COIL LOCATED ABOVE THE CENTER OF THE VALVE. 360°

*1 MIN. OPERATING VOLTAGE IS SHOWN IN COIL SPECIFICATION DRAWING

CONNECTIONS INDICATED BELOW SHOW AT COOLING MODE (WHEN COIL IS DE-ENERGIZED)

- D CONNECTION : DISCHARGE
- C CONNECTION : CONDENSER
- S CONNECTION : SUCTION
- E CONNECTION : EVAPORATOR

WE MANUFACTURE THE PRODUCT BASED ON THE SPECIFICATIONS DESCRIBED IN THIS DRAWING. PLEASE CHECK THE SAFETY AND VALIDITY IN THE PRODUCT DESIGN IN CONSIDERATION THAT THE PRODUCT IS CONFORMED TO THE SYSTEM OR NOT WHEN USING.

Approved by <i>S. Kobayashi</i>	Date JUL. 22 2008	Name 4-WAY REVERSING VALVE BODY
Designed by <i>H. Yamada</i>	Scale —	Catalog Number STF-2506G3
Drawn by <i>H. Yamada</i>		Drawing Number N-HV-26004

SAGINOMIYA SEISAKUSHO, INC.