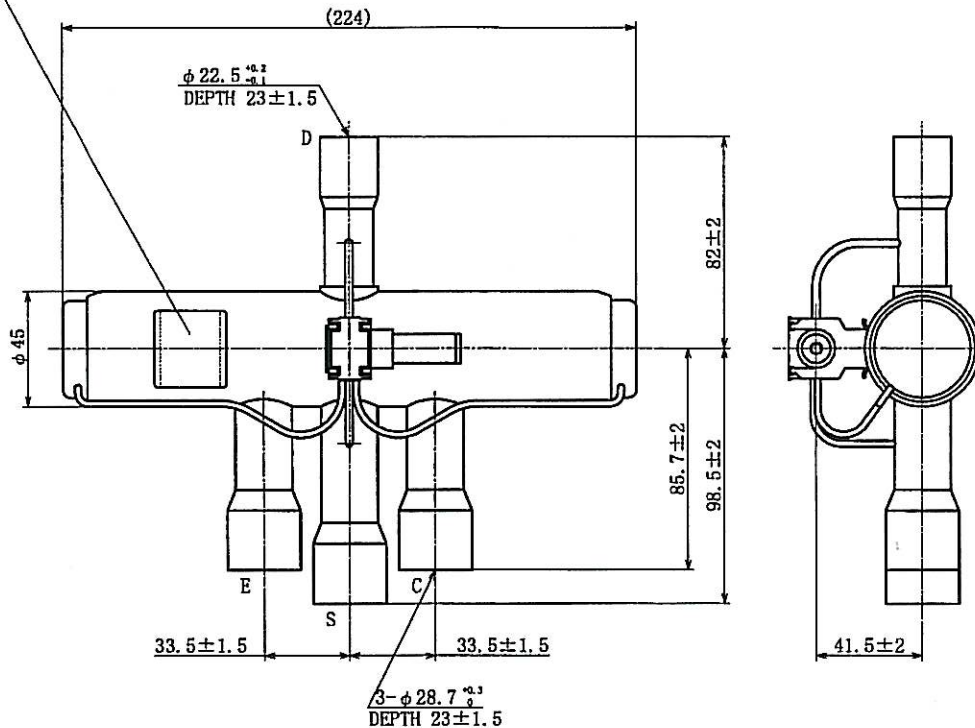


CATALOG No.
MANUFACTURING No.

EXAMPLE
6 21 0
YEAR
DAY
MONTH 1~9: JAN.~SEP.
X:OCTOBER
Y:NOVEMBER
Z:DECEMBER



CONNECTIONS INDICATED BELOW SHOW AT COOLING MODE
(WHEN COIL IS DE-ENERGIZED)

- D CONNECTION : DISCHARGE
- C CONNECTION : CONDENSER
- S CONNECTION : SUCTION
- E CONNECTION : EVAPORATOR

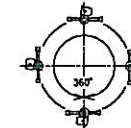


•WE MANUFACTURE THE PRODUCT BASED ON THE SPECIFICATIONS DESCRIBED IN THIS DRAWING. PLEASE CHECK THE SAFETY AND VALIDITY IN THE PRODUCT DESIGN IN CONSIDERATION THAT THE PRODUCT IS CONFORMED TO THE SYSTEM OR NOT WHEN USING.
•AND LEAK RATE(BYPASS FLOW) OF THE PRODUCT WHEN A SLIDE VALVE IS ON MEAN POSITION REDUCES COMPARED WITH OUR STANDARD MODELS. BE SURE TO EVALUATE CUT OFF FOR HIGH PRESSURE ON YOUR SYSTEM AND SO ON IF THE PRODUCT IS ADOPTED IN SYSTEM WITH NON-INVERTER COMPRESSOR(FIXED SPEED MOTOR).

SPECIFICATIONS

WATER TEST PRESSURE	WITH WATER PRESSURE 6.44 MPa (64.4 bar)
AIR TIGHT TEST PRESSURE	WITH AIR PRESSURE 4.5 MPa (45.0 bar)
MAX. WORKING PRESSURE	4.5 MPa (45.0 bar)
CONNECTION	ILLUSTRATE
FLUID	R22, R407C, R410A
PORT SIZE	20 mm
VALVE OPERATION	PILOT OPERATED 4-WAY REVERSING VALVE
DURABILITY	50000 TIMES TESTED BY AIR PRESSURE UNDER DISCHARGE PRESSURE 2.5MPa (25bar), SUCTION TUBE OPEN TO ATMOSPHERE AND BODY TEMP. NORMAL TEMPERATURE (LUB. OIL APPLIED DURING THE TEST)
MAX. OPERATING PRESS. DIFFERENTIAL	3.1 MPa (31 bar)
MIN. OPERATING PRESS. DIFFERENTIAL	0.3 MPa (3 bar) (PRESSURE DIFFERENTIAL NEEDED THROUGHOUT THE CHANGING-OVER MOVEMENT.)
VALVE LEAKAGE	6000 cm ³ /min. OR LESS WITH AIR UNDER O.P.D. 1 MPa (10bar) AND BODY TEMP. NORMAL TEMPERATURE BUT 9000 cm ³ /min. OR LESS AFTER THE DURABILITY TEST.
CAPACITY	* 1 R22, R407C : 18 ~ 45 R410A : 21 ~ 53
MIN. OPERATING VOLTAGE	* 2 85% OR LESS OF RATED VOLTAGE AT ΔP 2.5MPa (25bar)
AMBIENT TEMPERATURE	-30 ~ +55 °C
ALLOWABLE FLUID TEMPERATURE	-30 ~ +140 °C (*3)
MAX. ALLOWABLE TEMPERATURE	+130 °C

MOUNTING POSITION



AVAILABLE TO INSTALL IN ANY POSITIONS WITH THE BODY AXIS HOLD HORIZONTALLY. 360°

AVAILABLE TO INSTALL IN ANY POSITIONS WITH THE BODY AXIS VERTICALLY AND THE SOLENOID COIL LOCATED ABOVE THE CENTER OF THE VALVE. 360°

- *1 BE SURE TO CHANGE OVER 4-WAY VALVE WITHIN THE RANGE OF CAPACITY DESCRIBED IN THE DRAWING. DISCHARGE PRESSURE RISE OR STOP OF THE INTERNAL VALVE AT AN INTERMEDIATE POSITION MAY OCCUR IF IT IS CHANGED OVER OUTSIDE THE CAPACITY RANGE.
- *2 MIN. OPERATING VOLTAGE IS SHOWN IN COIL SPECIFICATION DRAWING
- *3 THE MAX. TEMPERATURE 140°C IS FLUID TEMPERATURE OF DISCHARGE SIDE.

NORDICOLD

Approved by <i>S. Nagaiwa</i>	Date JUN 21 2010	Name 4-WAY REVERSING VALVE BODY	
Designed by <i>S. Nagaiwa</i>	Scale 1:2	Catalog Number STF-0741G3	Drawing Number N-HV-17175
Drawn by <i>H. Humada</i> SAGINOMIYA SEISAKUSHO, INC.			

Input data	
Condensing Temp. [°C]	38
Evaporating Temp. [°C]	5
Super Heat [K]	0

Model	Discharge		Suction		Style	CAPACITY [kW]								
	mm	Inch	mm	Inch		Pressure drop across the valve [bar]								
						0,01	0,05	0,07	0,1	0,15	0,2	0,25	0,3	0,5
R407C														
STF-0741G	22.50	7/8	28.70	1 1/8	B	8,06	17,98	21,26	25,37	31,00	35,71	39,83	43,53	55,67
R404A														
STF-0741G	22.50	7/8	28.70	1 1/8	B	7,40	16,54	19,56	23,36	28,57	32,94	36,78	40,24	51,66
R410A														
STF-0741G	22.50	7/8	28.70	1 1/8	B	10,66	23,80	28,15	33,62	41,12	47,42	52,94	57,92	74,36