

★★★★
PRESTERA™

Product information

Ball valve with reduced flow made of stainless steel/CPTFE with internal threads and mounting flange for actuators. Suitable for automation. Three-piece for easy service and maintenance. Suitable for mainly acids and salt solutions, gas, steam, hot and cold water.

Dimension range (DN)	15 - 50
PN	125
Temperature (°C)	-30 - 260
Main material	Stainless steel

Area of use

Shut-off valve mainly for:

- Alkalis, acids, and salt solutions
- Solvents and alcohols
- LPG, natural gas, and petroleum products
- Hot and cold water as well as compressed air
- Saturated steam (see diagram)

Tender text

PSB.1 Ball valves

Stainless steel ball valve AT 3520... with reduced flow, internal thread, and steel handle. Packing made of carbon-filled PTFE.

Quality assurance

PED 2014/68/EU, AFS 2016:1, ATEX 2014/34/EU, SIL3, TA-air

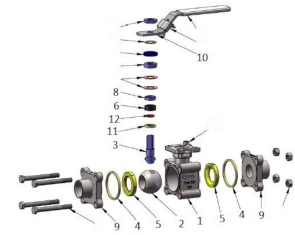
The product is CE marked

Testing is carried out according to ISO 5208. Leakage class A applies to the valve type. The valve is type-approved according to TA-luft. Material certificate according to EN 10204-3.1 is available. FDA (seats made of PPTFE).

Product marking: Manufacturer, DN, PN, material code, CE. In case of occurrence, also flow direction. QR code.

Energy and environment declaration

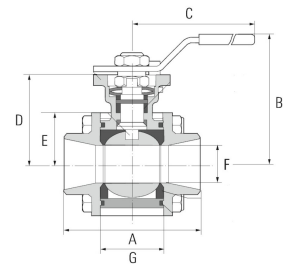
Pos	Component	Material
-----	-----------	----------



Measurements and weight

Dimension range (DN): 15 - 50

DN	A	B	C	D
15	75	76.6	140	42.6
20	73	76.6	140	42.6
25	86	81.7	140	46.8
32	106	98.3	170	59.3
40	111	101.6	170	62.6
50	130	128	230	79



Function and design

Three-piece ball valve for easy service and maintenance.

No disassembly or packing replacement required during welding.

Homogeneous flowing ball for tight shut-off and low pressure drop.

Self-compensating spindle packing provides tight valve at high operating frequency.

Blow-out proof antistatic spindle construction prevents spindle from being pushed out during pressure surges.

Mounting flange according to ISO 5211 for actuator.

No valve disassembly required for service and installation of actuator.

Valves larger than DN50 have a round valve body/mounting flange.

Technical data

Main material: Stainless steel

Main material code: Acid resistant stainless steel 316 (1.4401), Acid resistant stainless steel 316 (1.4408), Acid resistant stainless steel 316 (1.4409)

Included materials: Stainless steel, Other

Included material code: Acid resistant stainless steel 316 (1.4401), Acid resistant stainless steel 316 (1.4408), Acid resistant stainless steel 316 (1.4409), PTFE (polytetrafluoroethylene), Carbon filled PTFE

Temperature (°C): -30 - 260

PN: 125

Connection: Internal thread ISO 228-1 (G, BSPP)

ETIM classification: EC011343 - Ball valve

BK04 code: 20702 Ball valves

Installation and maintenance

Flowdirection: Bi-directional

Possible mounting position: Vertical, Horizontal

Welded-end valves can be welded without disassembly provided that the ball is in the open position. See separate manual for instructions. The valve should be operated regularly to avoid the accumulation of dirt that can lead to leakage.

Please feel free to contact us

We answer your questions by e-mail and telephone. No question is too small, no challenge is too big. You are always welcome at Armatec.

info@armatec.se | +46 31 89 01 00 | www.armatec.se

THE COMPANY'S MANAGEMENT SYSTEM
IS CERTIFIED BY DNV
ISO 9001 • ISO 14001