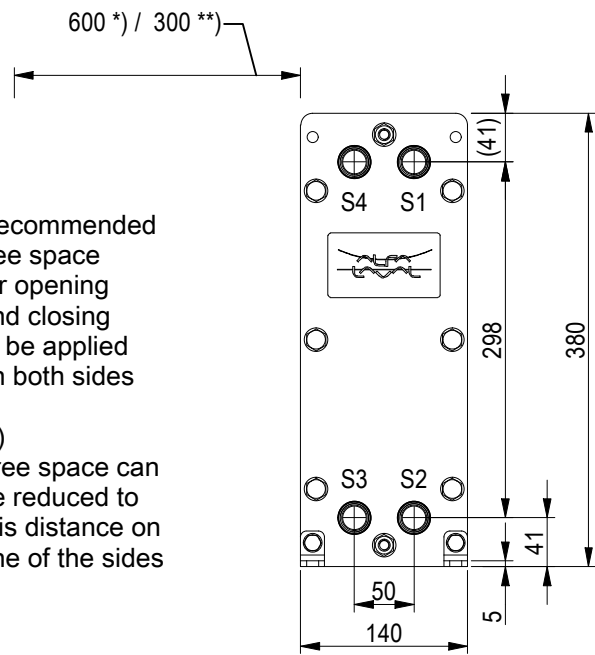


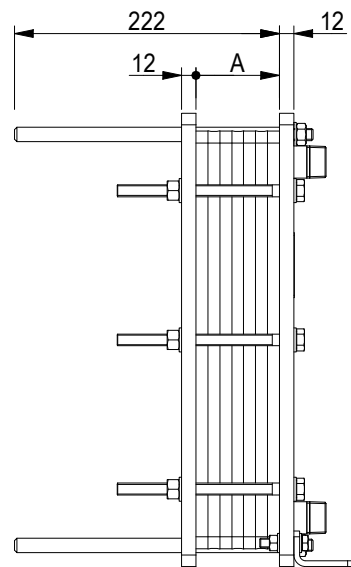
FRAME PLATE



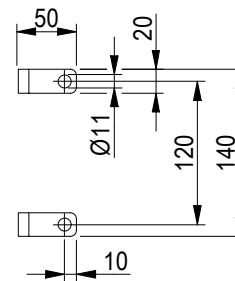
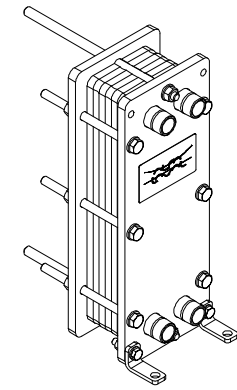
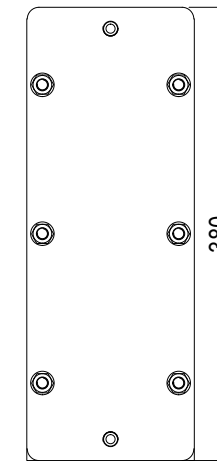
*) Recommended free space for opening and closing to be applied on both sides

**) Free space can be reduced to this distance on one of the sides

Space between pressure plate and supporting column should be kept free from fixed installations!

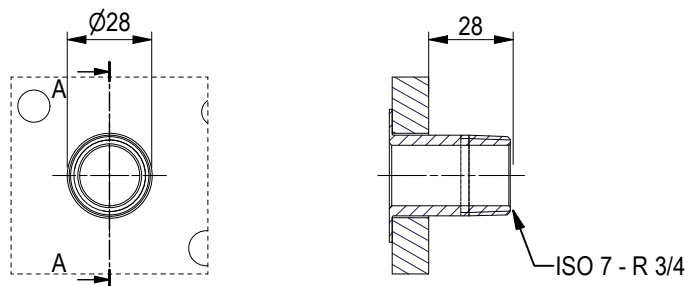


PRESSURE PLATE (MOVABLE)



ISO 7 - R 3/4, ALLOY 304, 40 mm
S1, S2, S3, S4

A-A:

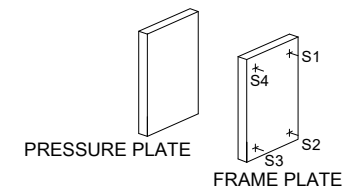


All dimensions in millimeters (mm)

NO. OF UNITS 1

APPROX. OUTER DIMENSIONS	
LENGTH	230 mm
WIDTH	150 mm
HEIGHT	390 mm
APPROX. WEIGHTS	
NET WEIGHT, EMPTY	16.6 kg
WEIGHT FULL OF WATER	18.4 kg
PLATE MATERIAL	ALLOY 316
PLATE THICKNESS	0.5 mm
GASKET	NBRP Clip-on

CHANNEL ARRANGEMENT 1*17 H
/ 1*17 H

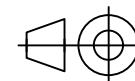


www.alfalaval.com

DRAWING
GASKETED PLATE HEAT EXCHANGER

T2-BFG

PED Article 4.3



8240125746

Do not use this drawing for foundation bolting or piping layout

DATE 3/2/22
REVISION 0