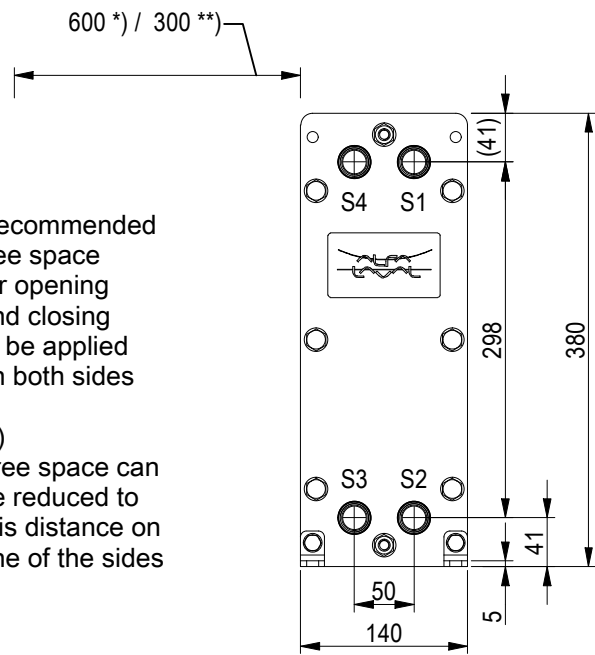


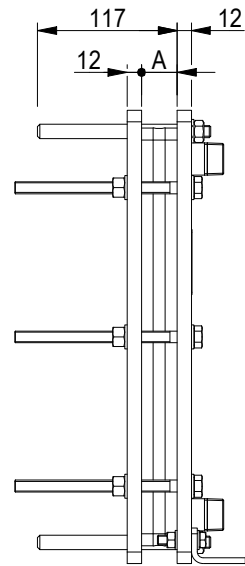
FRAME PLATE



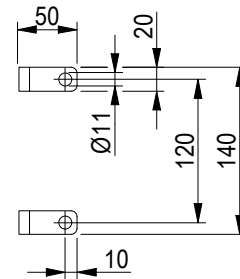
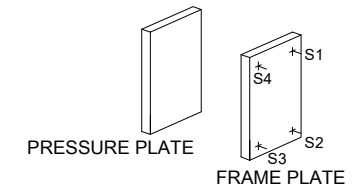
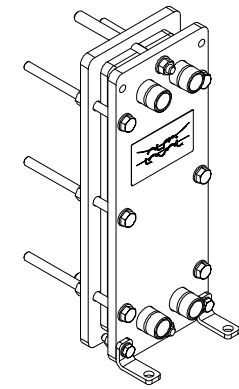
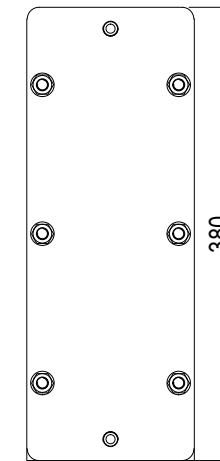
*) Recommended free space for opening and closing to be applied on both sides

**) Free space can be reduced to this distance on one of the sides

Space between pressure plate and supporting column should be kept free from fixed installations!

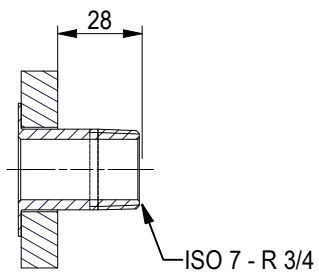
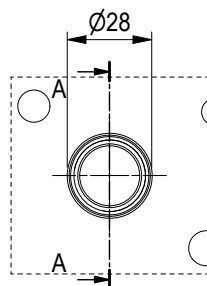


PRESSURE PLATE (MOVABLE)



ISO 7 - R 3/4, ALLOY 304, 40 mm
S1, S2, S3, S4

A-A:



All dimensions in millimeters (mm)

NO. OF UNITS

1

APPROX. OUTER DIMENSIONS

LENGTH 130 mm
WIDTH 150 mm
HEIGHT 390 mm

APPROX. WEIGHTS

NET WEIGHT, EMPTY 13.6 kg
WEIGHT FULL OF WATER 14.7 kg

PLATE MATERIAL ALLOY 316
PLATE THICKNESS 0.5 mm
GASKET NBRP Clip-on

CHANNEL ARRANGEMENT 1*9 H
/ 1*10 H

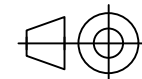


www.alfalaval.com

DRAWING
GASKETED PLATE HEAT EXCHANGER

T2-BFG

PED Article 4.3



8240125739

Do not use this drawing for foundation bolting or piping layout

DATE 3/2/22
REVISION 0