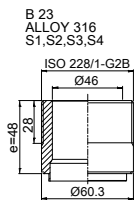
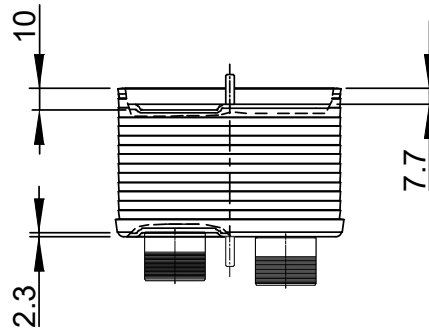
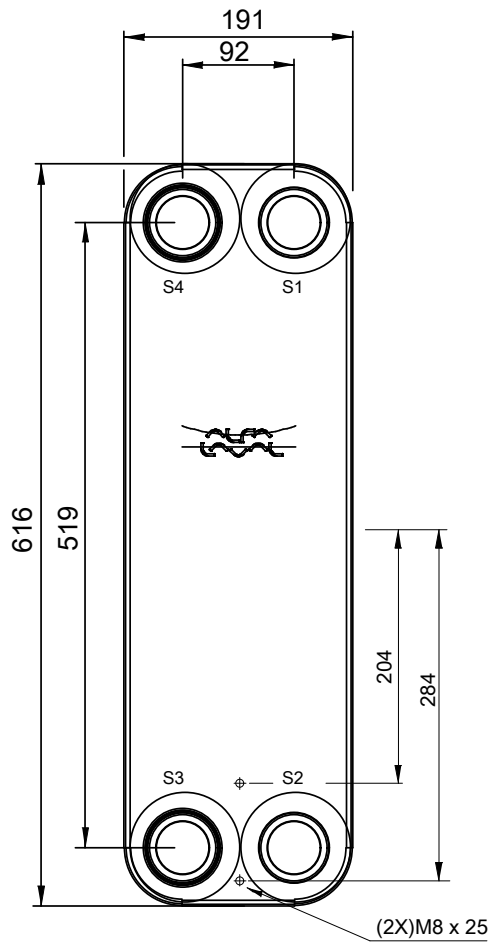
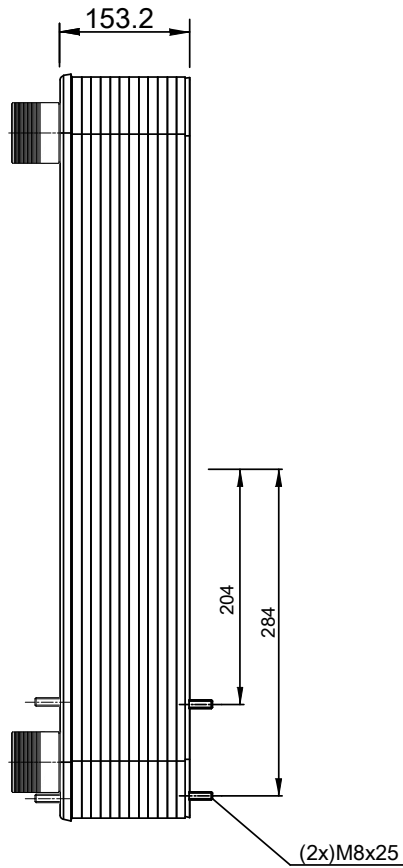


Note that all unique customer requirements (i.e tolerance) need to be verified thru Alfa Laval.



B 23  
ALLOY 316  
S1,S2,S3,S4

ISO 228/1-G2B

HEATING SURFACE m<sup>2</sup>  
NETWEIGHT 25.3 kg  
OPERATING WEIGHT kg  
PLATE MATERIAL ALLOY 316  
PLATE GROUPING 1\*26L/1\*27L

ALL DIMENSIONS IN MILLIMETERS

SIDE	MEDIA	INLET	TEMP. °C	OUTLET	TEMP. °C	FLOW RATE	PRESSURE DROP	LIQUID VOL.
1	Water	S1	°C	S2	°C	kg/s	kPa	5.7 dm <sup>3</sup>
2	Water	S3	°C	S4	°C	kg/s	kPa	5.5 dm <sup>3</sup>

PRESSURE VESSEL APPROVAL  
AT 8460CB110-54L

PED



www.alfalaval.com

CUSTOMER NAME / REF. NO.

TOTAL LENGTH 216 mm  
TOTAL WIDTH 191 mm  
TOTAL HEIGHT 616 mm

COMPANY / REF.

Armatec AB  
Äspholmen Värmdö 201216



12/17/2020  
REV 0