

Buffer tank for heat pump systems

- Volumes 270, 500, 750 and 1000 l
- Backup/additional heating connections
- Insulated in molded polyurethane
- Adjustable feet included
- Buffer 750 and 1000 also available with loose insulation blocks



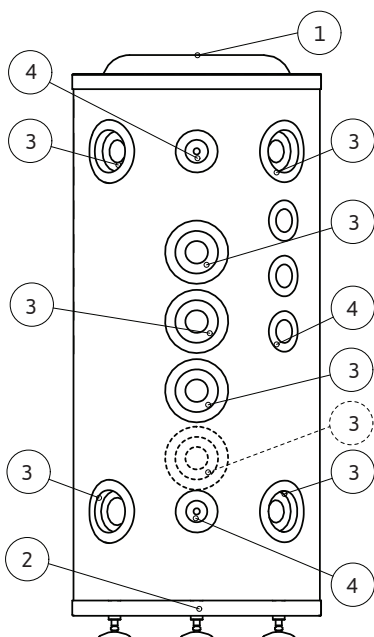
The purpose of Jäspi Buffer buffer tanks is to optimize the operation of geothermal and air-to-water heat pumps. In new projects, buffer tanks increase the water volume, and in renovation projects, they also ensure even heat for the radiators.



Technical data Jäspi Buffer	270	500	750	1000
HVAC-/product No	5360194	5360195	(T000866)	(T000867)
Dimensions H x Ø with loose blocks	1430* x 620 mm	1700* x 780 mm	2038 x 881 mm 2038 x 770 mm	2127 x 981 mm 2127 x 870 mm
Vertical lift height	1500 mm	1800 mm	2153 mm	2210 mm
Volume	270 l	500 l	750 l	1000 l
Weight	85 kg	130 kg	180 kg	210 kg
Max pressure	6 bar (on order 10 bar)			
Energy class	C	C		

* + adjustment foot 50-100 mm

Buffer 270, 500

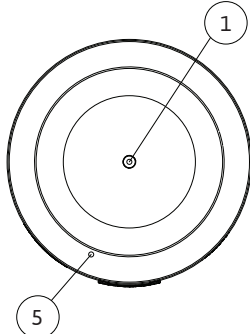


Buffer 270, 500

1. Vent connection (DN25)
2. Drain connection (DN25)
3. Coupling (DN50) 500: 4 pcs.
4. Coupling (DN15)
5. Sensor pockets

Buffer 750, 1000

1. Vent connection (DN25)
2. Drain connection (DN25)
3. Coupling (DN50)
4. Coupling (DN50) long
5. Coupling (DN15)



Buffer 750, 1000

