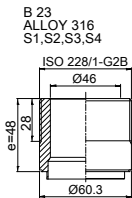
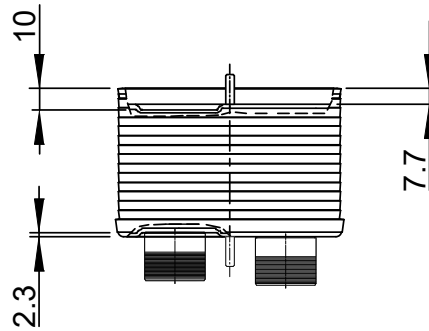
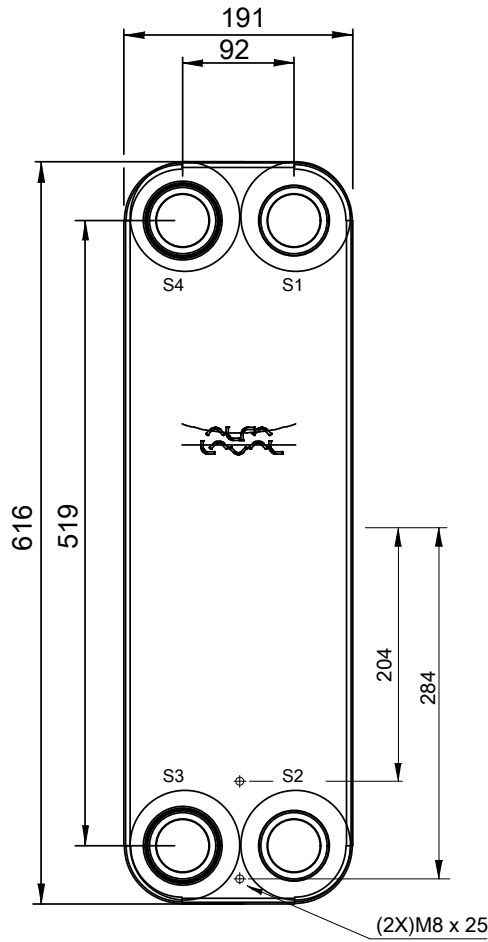
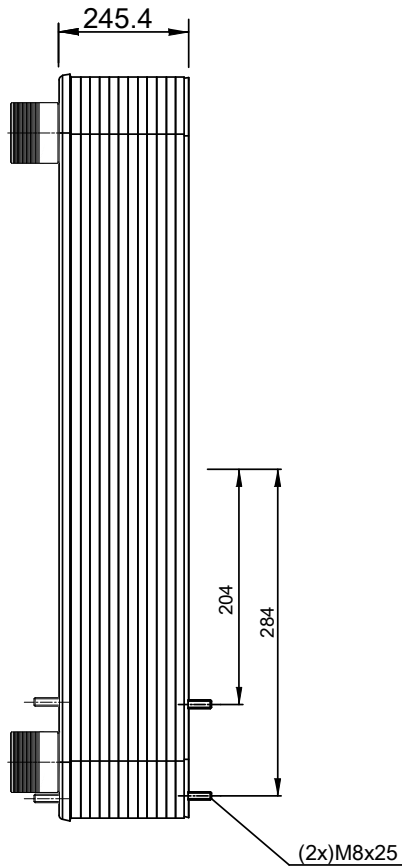


Note that all unique customer requirements (i.e tolerance) need to be verified thru Alfa Laval.



HEATING SURFACE m²
 NETWEIGHT 37.9 kg
 OPERATING WEIGHT kg
 PLATE MATERIAL ALLOY 316
 PLATE GROUPING 1*44ML/1*45MH

ALL DIMENSIONS IN MILLIMETERS

| SIDE | MEDIA | INLET | TEMP. °C | OUTLET | TEMP. °C | FLOW RATE | PRESSURE DROP | LIQUID VOL. |
|------|-------|-------|----------|--------|----------|-----------|---------------|---------------------|
| 1 | Water | S1 | °C | S2 | °C | kg/s | kPa | 9.5 dm ³ |
| 2 | Water | S3 | °C | S4 | °C | kg/s | kPa | 9.2 dm ³ |

PRESSURE VESSEL APPROVAL
 AT 8460CB110-90M

PED



www.alfalaval.com

CUSTOMER NAME / REF. NO.

TOTAL LENGTH 308 mm
 TOTAL WIDTH 191 mm
 TOTAL HEIGHT 616 mm

COMPANY / REF.

Armatec AB
 Äspholmen Värmdö 201216



12/17/2020
 REV 0