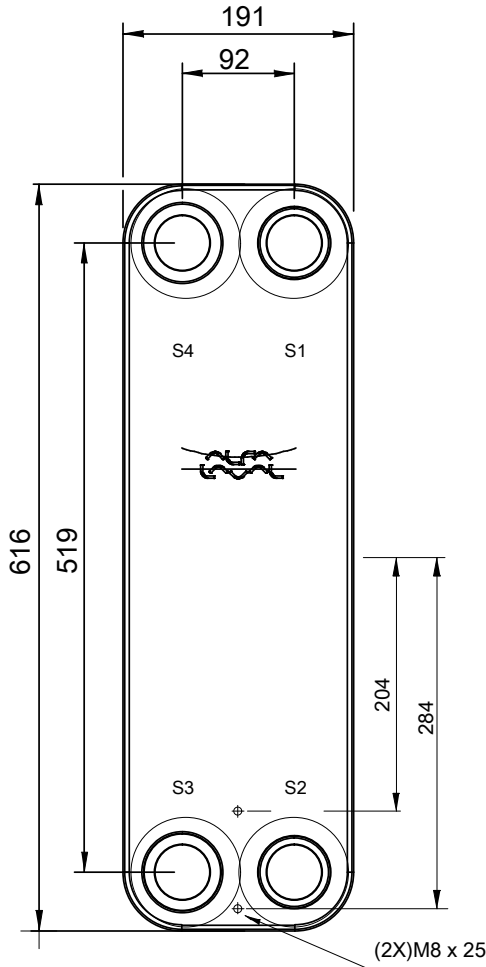
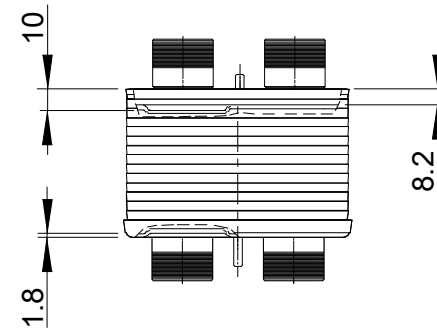
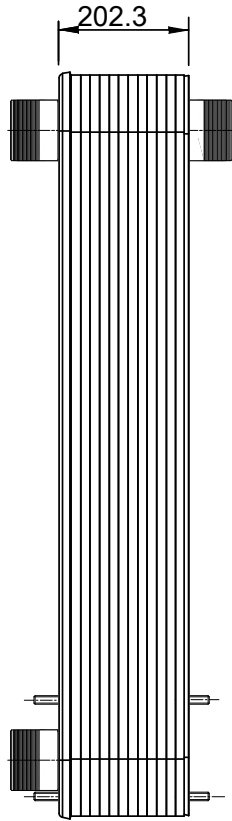
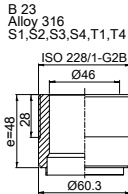


Note that all unique customer requirements (i.e tolerance) need to be verified thru Alfa Laval.



HEATING SURFACE  
 NETWEIGHT 49.1 kg  
 OPERATING WEIGHT  
 PLATE MATERIAL Alloy 316  
 PLATE GROUPING 2\*22L/1\*22L+1\*23L

T1 T2 T3 T4 locations on back side correspond to S1 S2 S3 S4 on front side

ALL DIMENSIONS IN MILLIMETERS

| SIDE | MEDIA | INLET | TEMP. | OUTLET | TEMP. | FLOW RATE | PRESSURE DROP | LIQUID VOL.          |
|------|-------|-------|-------|--------|-------|-----------|---------------|----------------------|
| 1    |       |       |       |        |       |           |               | 7.92 dm <sup>3</sup> |
| 2    |       |       |       |        |       |           |               | 8.1 dm <sup>3</sup>  |

PRESSURE VESSEL APPROVAL PED  
 CB112-90L 6 connections (3287119180)

www.alfalaval.com

CUSTOMER NAME / REF. NO.

TOTAL LENGTH 288.3 mm  
 TOTAL WIDTH 191.0 mm  
 TOTAL HEIGHT 616.0 mm

COMPANY / REF.



6/26/2017  
 REV 0