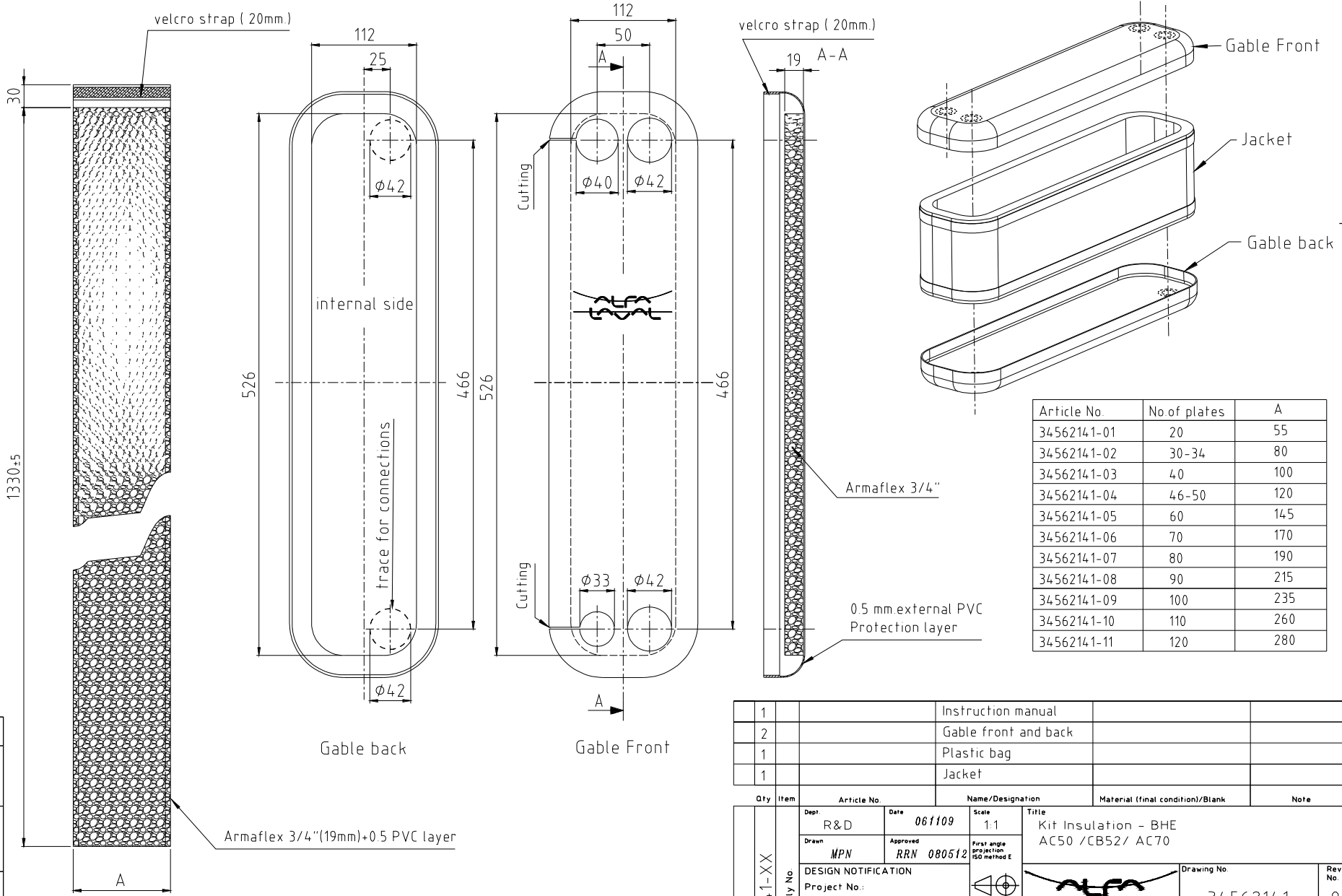


Only to the extent expressly agreed by us this document may constitute a contractual obligation on our part.  
 This document and its contents are the exclusive property of Alfa Laval AB and must not be copied, reproduced, transmitted or communicated to any other party or used for purposes not expressly permitted by us.



Article No	No of plates	A
34562141-01	20	55
34562141-02	30-34	80
34562141-03	40	100
34562141-04	46-50	120
34562141-05	60	145
34562141-06	70	170
34562141-07	80	190
34562141-08	90	215
34562141-09	100	235
34562141-10	110	260
34562141-11	120	280

1		Instruction manual		
2		Gable front and back		
1		Plastic bag		
1		Jacket		

**SÄRSKILDA KRAV  
SPEC. REQUIREMENTS**

Kanter brutna  
Grader avlägsnade  
Ytjämnhet Ra  
Edges broken  
Burr's removed  
Surface roughn. in Ra

Toleranser där ej annat angetts. Avser spånsvakligt bearbetn. slippa eller slansade ytor.  
Tolerances where not stated. Chip cutting, shearing or punching.

Basmått Basic size	Tol. Tol.
(1)	6 ± 0.2
(6)	30 ± 0.5
(30)	120 ± 0.8
(120)	315 ± 1.2
(315)	1000 ± 2
(1000)	2000 ± 3
(2000)	4000 ± 4

Qty	Item	Article No.	Name/Designation	Material (final condition)/Blank	Note
	Dept:	R&D	Date: 061109	Scale: 1:1	Title: Kit Insulation - BHE AC50 /CB52/ AC70
	Drawn:	MPN	Approved: RRR 080512	First angle projection ISO method E	
	Assembly No:	34562141-XX	DESIGN NOTIFICATION	Project No.:	Drawing No: 34562141
			Change Level:		Rev No: 0
			Text:		