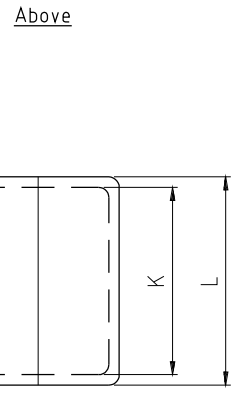
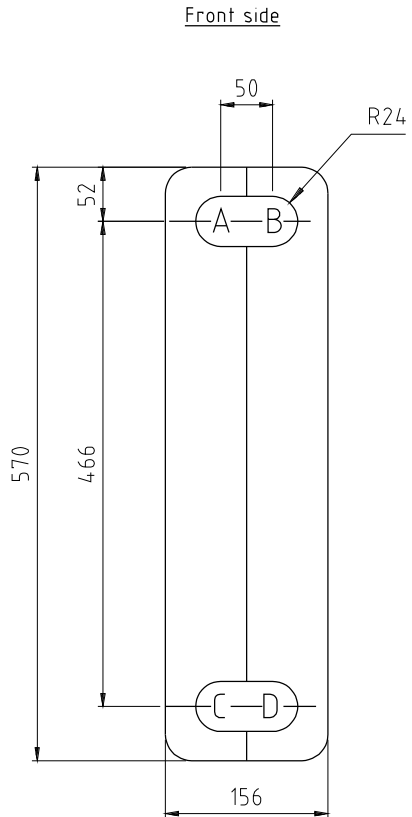


Only to the extent expressly agreed by us this document may constitute a contractual obligation on our part

This document and its contents are the exclusive property of Alfa Laval AB and must not be copied, reproduced, transmitted or communicated to any other party or used for purposes not expressly permitted by us.



Max No. of plates				
AlfaNova	CB	K	L	ARTICLE NO.
0-28	0-30	85	125	34561047-01
29-56	31-60	157	197	34561047-02

2) NOTE  
 THERMAL CONDUCTIVITY: 0.035-0.039 W/mK

SÄRSKILDA KRAV  
 SPEC. REQUIREMENTS

Kanter brutna  
 Grader avlagsnade  
 Ytjämnhet Ra  
 Edges broken  
 Burrs removed  
 Surface roughn. in Ra

Toleranser där ej annat angetts. Avser spånavsckilj, bearbetn., klippta eller stansade ytor.  
 Tolerances where not stated. Chip cutting, shearing or punching.

Basmått Basic size	Tol.
(1)	6 ± 0.2
(6)	30 ± 0.5
(30)	120 ± 0.8
(120)	315 ± 1.2
(315)	1000 ± 2
(1000)	2000 ± 3
(2000)	4000 ± 4

Qty	Item	Article No.	Name/Designation	Material (final condition)/Blank	Note					
		34561047-XX	INSUL. BLACK	EPP	1.)					
Assembly No.	Dept.	PC CHE	Date	120322	Scale	1:5	Title	INSULATION EPP BLACK CB52/60, AN52 BHE / FHE		
	Drawn	AHN	Approved	AEK 140506	First angle projection ISO method E					
	DESIGN NOTIFICATION		Project No.:		Change Level: 2		Text:		CB60 added. Note added	
							Drawing No.		34561047	
						Rev. No.		2		