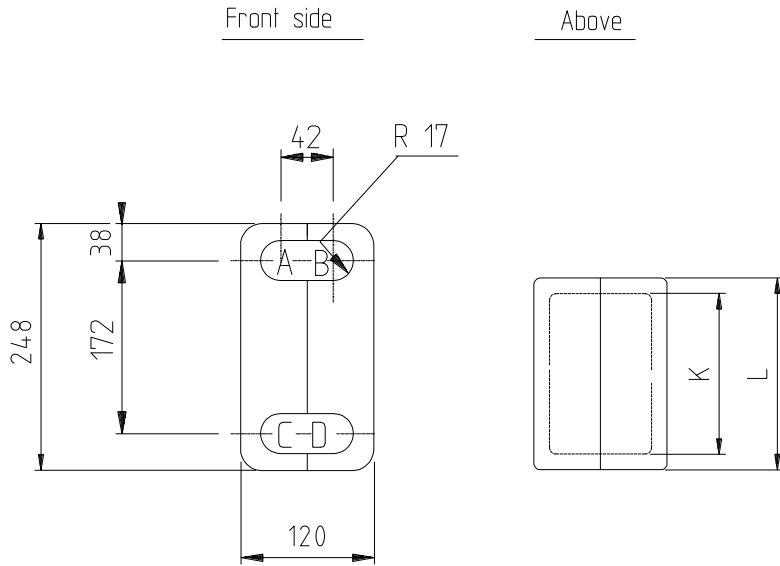


Only to the extent expressly agreed by us this document may constitute a contractual obligation on our part

This document and its contents are the exclusive property of Alfa Laval AB and must not be copied, reproduced, transmitted or communicated to any other party or used for purposes not expressly permitted by us.



TYPE	K	L	ARTICLE NO.
CB14 / 0-14	41	81	34-561197-01
CB14 / 20-40	102	142	34-561197-02

TYPE	K	L	ARTICLE NO.
CB16 / 0-17	41	81	34-561197-01
CB16 / 20-45	102	142	34-561197-02

1.) NOTE
 THERMAL CONDUCTIVITY: 0.035-0.039 W/mK

SÄRSKILDA KRAV
 SPEC. REQUIREMENTS

Kanter brutna
 Grader avlagsnade
 Ytjämnhet Ra

Edges broken
 Burrs removed
 Surface roughn. in Ra

Toleranser där ej annat angetts. Avser spånavsckilj, bearbetn., klippta eller stansade ytor.
 Tolerances where not stated. Chip cutting, shearing or punching.

Basmått Basic size	Tol.
(1)	6 ± 0.2
(6)	30 ± 0.5
(30)	120 ± 0.8
(120)	315 ± 1.2
(315)	1000 ± 2
(1000)	2000 ± 3
(2000)	4000 ± 4

Qty	Item	Article No.	Name/Designation	Material (final condition)/Blank	Note				
		34-561197-XX	INSUL. BLACK	EPP	1.)				
Assembly No.	Dept.	R&D	Date	130125	Scale	1:5	Title INSULATION EPP BLACK CB14, CB16 BHE	Drawing No. 34561197	Rev. No. 2
	Drawn	AEK	Approved	AHN 130125	First angle projection ISO method E				
	DESIGN NOTIFICATION								
	Project No.: Change Level: 2 Text: Note added.								