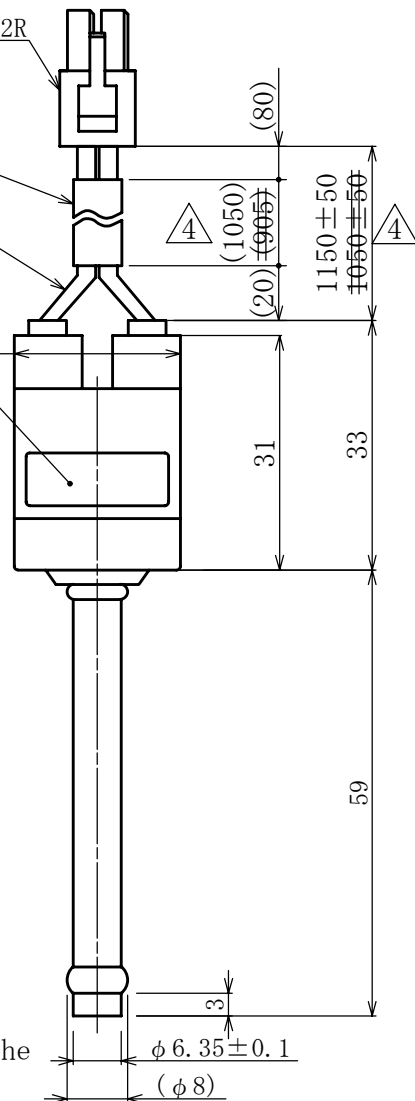
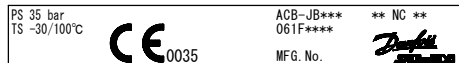


Contact
MOLEX 5556T
Housing
MOLEX 5557-02R

HEAT PROOF ELECTRIC VINYL WIRE
UL1015, AWG18, 105°C (BLACK)

2 LABEL



CORD NUMBER	CATALOG NUMBER	OPERATING PRESS. SETTING UNIT: bar		PVC TUBE COLOR
		OFF	ON	
061F8104	ACB-JB198	31±1	23±1.5	BLACK
061F8105	ACB-JB200	20±1	15±1	GREEN
061F8350	ACB-JB259	26±1	21±1.5	GRAY BLACK

AT BRAZING OF PIPES, WRAP THE SWITCH BODY WITH WET CLOTH AND KEEP THE TEMPERATURE OF SWITCH BODY UNDER 100°C

OPERATING PRESS. CHARACTERISTICS	OPERATING PRESS. SETTING UNIT: bar		DIFFERENTIAL			
	OFF	ON	—			
Refer to left chart						
ELECTRICAL RATINGS	RATED VOLTAGE (V)		PF	A	C	DC
	RATED AMPS. (A)		Cos φ	125	250	12
	NON-INDUCTIVE AMPS.		1	1~6	1~4	1~4
	INDUCTIVE AMPS.	FULL LOAD AMPS.	0.75	1~6	1~4	—
STARTING AMPS.		0.45	1~24	1~16	—	
TYPE OF CONTACT	<p>PRESS. RISING</p>					
CONTACT RESISTANCE	LESS THAN 200 m Ω					
INSULATION RESISTANCE	NOT LESS THAN 100 M Ω AT DC 500V MEGGER					
DIELECTRIC STRENGTH	WITHSTAND 1500V AC FOR ONE MINUTE					
MAX. PRESSURE	35 bar					
AIR TIGHT PRESS.	40 bar					
TEST PRESS.	50 bar					
MAX. ALLOW. TEMP.	-30 ~ 100 °C (But no freeze)					
DURABILITY	100,000 TIMES					

Checked by	Date	Name	TYPE CB PRESSURE SWITCH		
	OCT. 02 2002				
Designed by	Scale	Catalog Number	Drawing Number		
	1:1	ACB-JB***	N-CB-22167-6		
Drawn by	Code No. :061F ****				

MAY 31, '04	5	ADD. ACB-JB259
MAR 03, '04	4	REV. WIRE LENGTH & REV. PRESS. SETTING
NOV. 19, '03	3	REV. PVC TUBE COLOR
NOV. 10, '03	2	INK STAMPING -> LABEL
OCT 06, '04	6	REV. PVC TUBE COLOR
DATE	SIGN	CHANGE CONTENT



★CONFIRMATION OF DESIGN VALIDITY
We manufacture the product based on the specifications described in this drawing. Please check the safety and validity in the product design in consideration that the product is conformed to the system or not when using.