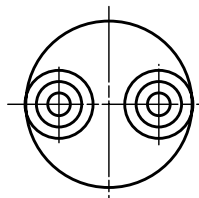


OPERATING PRESSURE CHANGES ACCORDING TO CHANGE OF AMBIENT TEMP ON WATER PROOF TYPE

AMBIENT TEMP	-20°C	70°C	100°C
CHANGE OF CHARACTERISTICS	-0.2 kgf/cm <sup>2</sup>	+0.25 kgf/cm <sup>2</sup>	+0.4 kgf/cm <sup>2</sup>

①



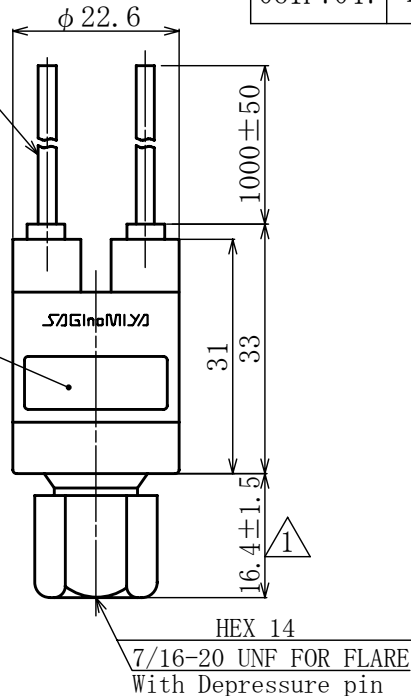
CORD NUMBER	CATALOG NUMBER	OPERATING PRESS. SETTING UNIT:kgf/cm <sup>2</sup> G	
		OFF	ON
061F7214	LCB-PA12	3±0.5	4±0.5
061F7046	LCB-PA13	1.5±0.5	2.5±0.5
061F7047	LCB-PA14	0.3±0.2	1.3±0.5

OPERATING PRESS. SETTING UNIT:kgf/cm <sup>2</sup> G	DIFFERENTIAL	
	OFF	ON
Refer to left chart		

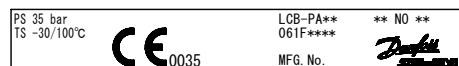
RATED VOLTAGE (V)	PF	A C		DC
		125	250	12
RATED AMPS. (A)		1	1~6	1~4
NON-INDUCTIVE AMPS.		1	1~6	1~4
INDUCTIVE AMPS.	FULL LOAD AMPS.	0.75	1~6	1~4
	STARTING AMPS.	0.45	1~24	1~16

HEAT PROOF ELECTRIC VINYL WIRE  
0.75mm, 105°C (BLACK), φ 3.1  
INSULATOR: t0.6, SHEATH: t0.4

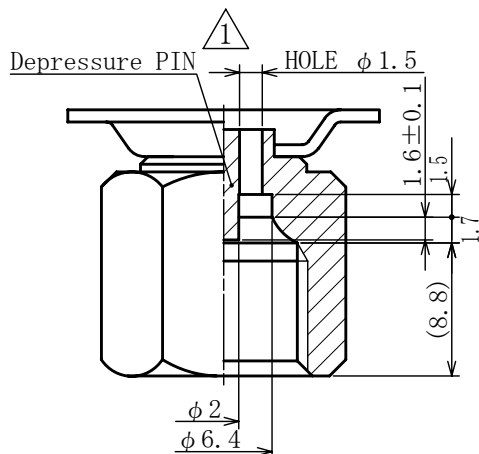
①



② LABEL



①



①

(2:1)

★CONFIRMATION OF DESIGN VALIDITY

We manufacture the product based on the specifications described in this drawing. Please check the safety and validity in the product design in consideration that the product is conformed to the system or not when using.

TYPE OF CONTACT	 PRESS. RISING
-----------------	-------------------

CONTACT RESISTANCE	LESS THAN 200 mΩ
INSULATION RESISTANCE	NOT LESS THAN 100 MΩ AT DC 500V MEGGER
DIELECTRIC STRENGTH	WITHSTAND 1500V AC FOR ONE MINUTE
② MAX. PRESSURE	35.7 kgf/cm <sup>2</sup> G (35 bar)
② AIR TIGHT PRESS.	35.7 kgf/cm <sup>2</sup> G
② TEST PRESS.	40 kgf/cm <sup>2</sup> G
① MAX. ALLOW. TEMP.	-30 ~ 100 °C (But no freeze)
DURABILITY	10,000 TIMES

Checked by	Date	Name	TYPE CB PRESSURE SWITCH
T. T.	06. SEP. 1990		
Designed by	Scale	Catalog Number	Drawing Number
	1:1	LCB-PA**	N-CB-41117-2

Drawn by	Code No. :061F ****
K. H.	

JUN 08, '04	②	REV. DWG. FORMAT, INK STAMPING -> LABEL, REV. MAX. /AIR TIGHT/TEST PRESS.
10. JAN. 2001	①	REV. SHAPES, REV. DIM., ADD. NOTE, REV. VINYL WIRE (φ 3.3 → φ 3.1), REV. CHANGE OF CHARACTERISTICS & ADD. CONFIRMATION OF DESIGN VALIDITY
DATE	SIGN	CHANGE CONTENT

