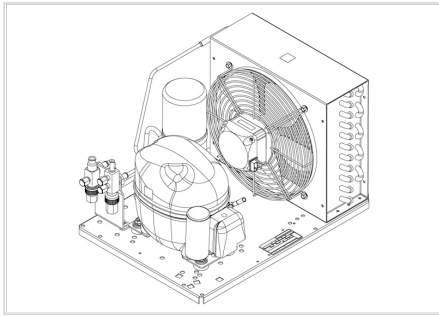


MODEL


UNEK6181GK

embraco
Nidec





APPROVALS



 **ENGINEERING CODE**
557MA8212AA


 **APPROVED REFRIGERANT**
R452A

 **POWER SUPPLY**
220 - 240V 50Hz ~

 **STANDARD CONDITIONS**
EN13215_RG20

 **APPLICATION**
M/HBP

 **COOLING CAPACITY**
658 W

 **EFFICIENCY**
1.56 W/W

DATA

General Data

Weight	21 Kg
Receiver	1.1 L
Height	296 mm
Length	465 mm
Width	340 mm
Power Supply	220 - 240 V 50 Hz

Electrical Data

Motor Type	CSIR
Locked Rotor Amperage (LRA)	12 A
Max Current	2.7 A

Spare Parts

Condenser	3R11T	2451206
Fan Kit	16W 254/28/5B	1996610
Valve Suction	FLARE 3/8"	2110059
Valve Discharge	FLARE 1/4"	2110085
Compressor	NEK6181GK	957MA51..AN
Electrical Kit	ELKOM NEK6181GK	957MA51N1A

Noise Data

Sound Power Level	64.3 dB (A)	-	-
Sound Pressure Level	at 1 m	at 5 m	at 10 m
	56.3 dB (A)	42.3 dB (A)	36.3 dB (A)

Fan Motor

Number	1
Shaft Power	16 W
Air Flow	595 m ³ /h
Blade diameter	254 mm

PERFORMANCE

Rated Points

Ambient Temperature	Cooling Capacity	Power Consumption	Current	Efficiency
32.00°C	658 W	423 W	2.79 A	1.56 W/W

Test Condition EN13215_RG20: Evaporating temp. -10.00°C, Ambient temp. 32.00°C, Return Gas 20 °C, Subcooling 3K

Performance Curve Data

Ambient Temperature 25°C

Evaporating Temperature °C	Cooling Capacity W	Power Consumption W	Current A	Efficiency W/W
-20	477	341	2.47	1.4
-15	584	371	2.58	1.57
-10	702	405	2.69	1.73
-5	832	442	2.82	1.88
0	978	481	2.97	2.03
5	1143	520	3.13	2.19
10	1329	561	3.32	2.37

Test Condition EN13215_RG20: Evaporating temp. -10.00°C, Ambient temp. 25.00°C, Return Gas 20 °C, Subcooling 3K

Ambient Temperature 32°C

Evaporating Temperature °C	Cooling Capacity W	Power Consumption W	Current A	Efficiency W/W
-20	437	357	2.58	1.22
-15	542	388	2.68	1.4
-10	658	423	2.79	1.56
-5	786	461	2.91	1.71
0	931	502	3.05	1.86
5	1096	545	3.21	2.01
10	1282	589	3.4	2.18

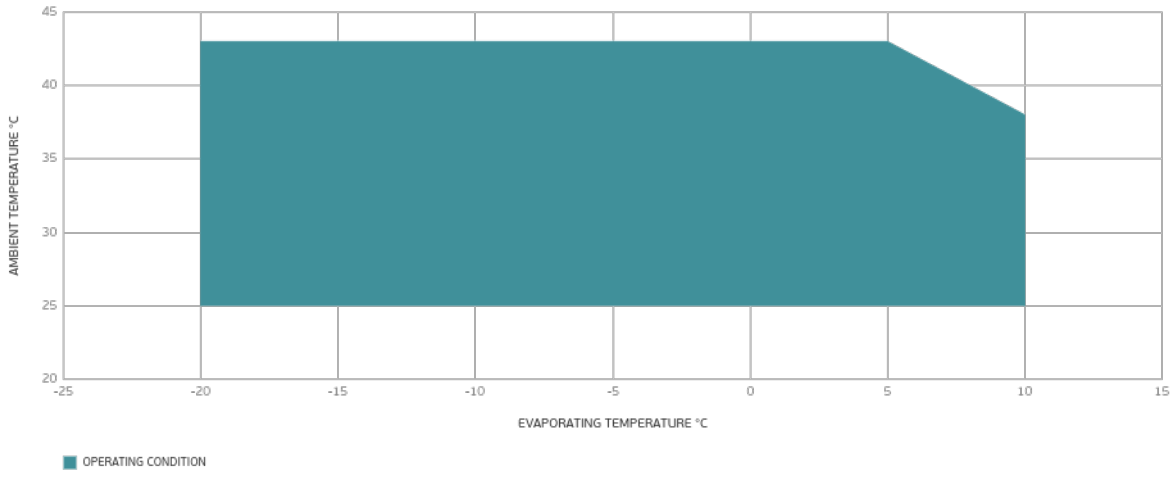
Test Condition EN13215_RG20: Evaporating temp. -10.00°C, Ambient temp. 32.00°C, Return Gas 20 °C, Subcooling 3K

Ambient Temperature 43°C

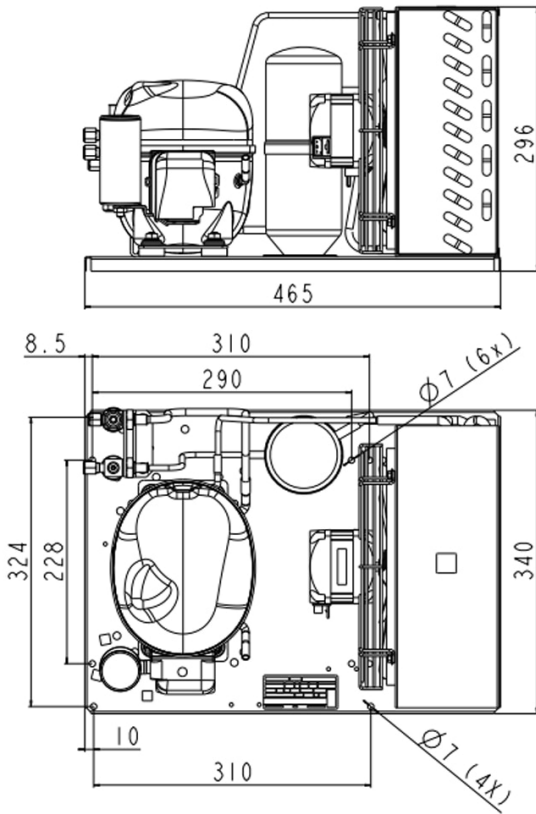
Evaporating Temperature °C	Cooling Capacity W	Power Consumption W	Current A	Efficiency W/W
-20	363	368	2.57	0.99
-15	454	409	2.72	1.11
-10	557	455	2.88	1.22
-5	673	505	3.05	1.33
0	807	560	3.24	1.44
5	961	618	3.45	1.55
10	1138	679	3.69	1.68

Test Condition EN13215_RG20: Evaporating temp. -10.00°C, Ambient temp. 43.00°C, Return Gas 20 °C, Subcooling 3K

Operating Envelope



External Dimensions



Wiring Diagram

