


APPROVALS



 **ENGINEERING CODE**
647AML803AA


 **APPROVED REFRIGERANT**
R452A

 **POWER SUPPLY**
380 - 420V 50Hz ~

 **STANDARD CONDITIONS**
EN13215_RG20

 **APPLICATION**
LBP

 **COOLING CAPACITY**
853 W

 **EFFICIENCY**
1.18 W/W

DATA

General Data

Weight	36.5 Kg
Receiver	2.3 L
Height	324 mm
Length	481 mm
Width	395 mm
Power Supply	380 - 420 V 50 Hz

Electrical Data

Motor Type	3PH
Locked Rotor Amperage (LRA)	13 A
Max Current	2.38 A

Spare Parts

Condenser	3R12T	2451140
Valve Discharge	SOLDER 3/8"	2110049
Valve Suction	SOLDER 5/8"	2110054
Dryer	FILTER DRYER 3/8" SAE	2730016
Sight Glass	SIGHT GLASS 3/8" SAE	2464232
Compressor	NJ2212GS	947AM19..AC
Fan Kit	34W/400V 275/31	1996582

Noise Data

Sound Power Level	71.5 dB (A)	-	-
Sound Pressure Level	at 1 m	at 5 m	at 10 m
	63.5 dB (A)	49.6 dB (A)	43.5 dB (A)

Fan Motor

Number	1
Shaft Power	34 W
Air Flow	800 m ³ /h
Blade diameter	275 mm

PERFORMANCE

Rated Points

Ambient Temperature	Cooling Capacity	Power Consumption	Current	Efficiency
32.00°C	853 W	722 W	1.88 A	1.18 W/W

Test Condition EN13215_RG20: Evaporating temp. -35.00°C, Ambient temp. 32.00°C, Return Gas 20 °C, Subcooling 3K

Performance Curve Data

Ambient Temperature 25°C

Evaporating Temperature °C	Cooling Capacity W	Power Consumption W	Current A	Efficiency W/W
-40	647	577	1.75	1.12
-35	928	721	1.87	1.29
-30	1218	869	2.02	1.4
-25	1511	1024	2.19	1.48
-20	1801	1189	2.4	1.51
-15	2083	1367	2.64	1.52
-10	2352	1560	2.92	1.51

Test Condition EN13215_RG20: Evaporating temp. -35.00°C, Ambient temp. 25.00°C, Return Gas 20 °C, Subcooling 3K

Ambient Temperature 32°C

Evaporating Temperature °C	Cooling Capacity W	Power Consumption W	Current A	Efficiency W/W
-40	650	565	1.74	1.15
-35	853	722	1.88	1.18
-30	1070	887	2.05	1.21
-25	1295	1062	2.25	1.22
-20	1524	1250	2.48	1.22
-15	1750	1453	2.75	1.2
-10	1969	1676	3.06	1.17

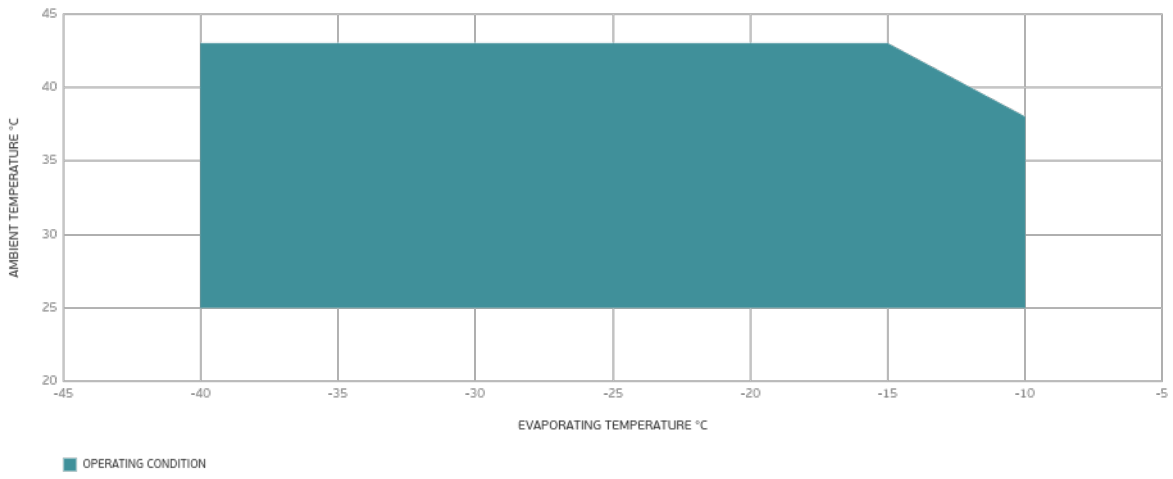
Test Condition EN13215_RG20: Evaporating temp. -35.00°C, Ambient temp. 32.00°C, Return Gas 20 °C, Subcooling 3K

Ambient Temperature 43°C

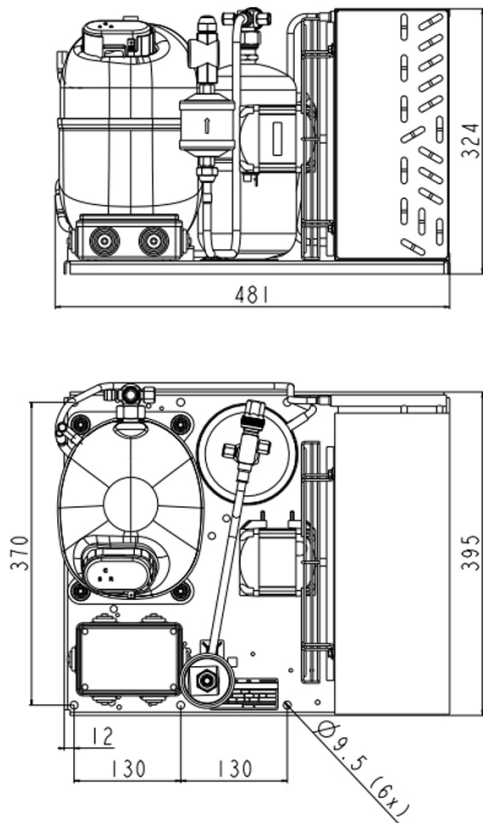
Evaporating Temperature °C	Cooling Capacity W	Power Consumption W	Current A	Efficiency W/W
-40	374	550	1.73	0.68
-35	562	693	1.85	0.81
-30	774	848	2.01	0.91
-25	1003	1018	2.21	0.99
-20	1245	1206	2.44	1.03
-15	1493	1416	2.72	1.06
-10	1743	1648	3.04	1.06

Test Condition EN13215_RG20: Evaporating temp. -35.00°C, Ambient temp. 43.00°C, Return Gas 20 °C, Subcooling 3K

Operating Envelope



External Dimensions



Wiring Diagram

