


APPROVALS



 **ENGINEERING CODE**
559HA5312AA

 **APPROVED REFRIGERANT**
R513A

 **POWER SUPPLY**
220 - 240V 50Hz ~

 **STANDARD CONDITIONS**
EN13215_RG20

 **APPLICATION**
M/HBP

 **COOLING CAPACITY**
805 W

 **EFFICIENCY**
1.43 W/W

DATA

General Data

Weight	20.5 Kg
Height	296 mm
Length	465 mm
Width	340 mm
Power Supply	220 - 240 V 50 Hz

Electrical Data

Motor Type	CSIR
Locked Rotor Amperage (LRA)	21.2 A
Max Current	5.17 A

Spare Parts

Condenser	3R11T	2451206
Fan Kit	16W 254/28/5B	1996579
Compressor	NEK6214Z	269JA51..AN
Electrical Kit	ELKOM NEK6214Z	269JA51N1A

Noise Data

Sound Power Level	65 dB (A)	-	-
Sound Pressure Level	at 1 m	at 5 m	at 10 m
	57 dB (A)	43 dB (A)	37 dB (A)

Fan Motor

Number	1
Shaft Power	16 W
Air Flow	595 m ³ /h
Blade diameter	254 mm

PERFORMANCE

Rated Points

Ambient Temperature	Cooling Capacity	Power Consumption	Current	Efficiency
32.00°C	805 W	564 W	4.49 A	1.43 W/W

Test Condition EN13215_RG20: Evaporating temp. -10.00°C, Ambient temp. 32.00°C, Return Gas 20 °C, Subcooling 3K

Performance Curve Data

Ambient Temperature 25°C

Evaporating Temperature °C	Cooling Capacity W	Power Consumption W	Current A	Efficiency W/W
-15	740	497	4.26	1.49
-10	891	550	4.37	1.62
-5	1059	609	4.51	1.74
0	1242	673	4.68	1.84
5	1442	743	4.88	1.94
10	1656	818	5.11	2.03

Test Condition EN13215_RG20: Evaporating temp. -10.00°C, Ambient temp. 25.00°C, Return Gas 20 °C, Subcooling 3K

Ambient Temperature 32°C

Evaporating Temperature °C	Cooling Capacity W	Power Consumption W	Current A	Efficiency W/W
-15	669	510	4.37	1.31
-10	805	564	4.49	1.43
-5	956	624	4.63	1.53
0	1123	689	4.79	1.63
5	1306	760	4.99	1.72
10	1504	836	5.22	1.8

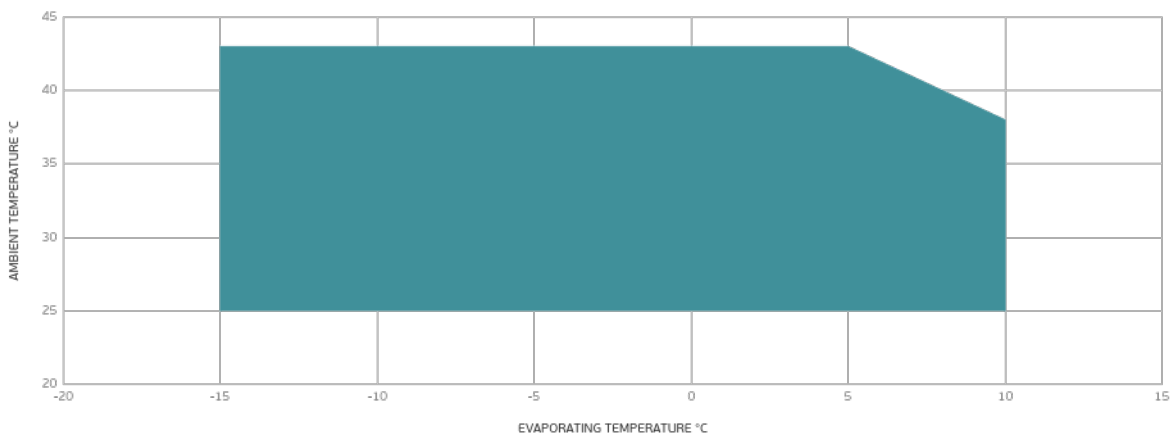
Test Condition EN13215_RG20: Evaporating temp. -10.00°C, Ambient temp. 32.00°C, Return Gas 20 °C, Subcooling 3K

Ambient Temperature 43°C

Evaporating Temperature °C	Cooling Capacity W	Power Consumption W	Current A	Efficiency W/W
-15	537	529	4.33	1.02
-10	656	592	4.49	1.11
-5	791	661	4.68	1.2
0	941	736	4.89	1.28
5	1106	817	5.14	1.35
10	1285	904	5.43	1.42

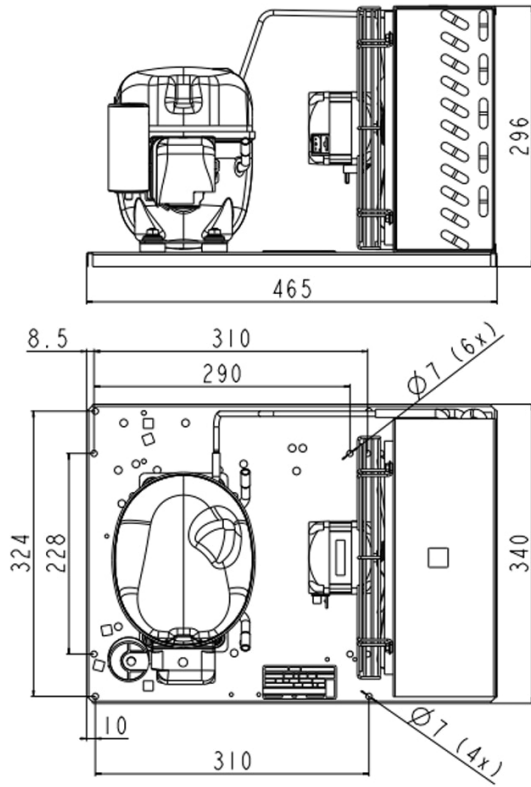
Test Condition EN13215_RG20: Evaporating temp. -10.00°C, Ambient temp. 43.00°C, Return Gas 20 °C, Subcooling 3K

Operating Envelope



■ OPERATING CONDITION

External Dimensions



Wiring Diagram

