



APPROVALS




 **ENGINEERING CODE**
557BA5212AA


 **APPROVED REFRIGERANT**
R513A

 **POWER SUPPLY**
220 - 240V 50Hz ~

 **STANDARD CONDITIONS**
EN13215_RG20

 **APPLICATION**
M/HBP

 **COOLING CAPACITY**
391 W

 **EFFICIENCY**
1.55 W/W

DATA

General Data

Weight	18.9 Kg
Receiver	0.6 L
Height	254 mm
Length	435 mm
Width	300 mm
Power Supply	220 - 240 V 50 Hz

Electrical Data

Motor Type	CSIR
Locked Rotor Amperage (LRA)	11.5 A
Max Current	2.15 A

Spare Parts

Valve Suction	FLARE 3/8"	2110024
Valve Discharge	FLARE 1/4"	2110025
Compressor	NEK6160Z	267BA92..AM
Condenser	3R9T	2451205
Fan Kit	10W 230/31/5B	1996699
Electrical Kit	ELCOM NEK6160Z	267BA51M1P

Noise Data

Sound Power Level	61.2 dB (A)	-	-
Sound Pressure Level	at 1 m	at 5 m	at 10 m
	53.2 dB (A)	39.2 dB (A)	33.2 dB (A)

Fan Motor

Number	1
Shaft Power	10 W
Air Flow	420 m ³ /h
Blade diameter	230 mm

PERFORMANCE

Rated Points

Ambient Temperature	Cooling Capacity	Power Consumption	Current	Efficiency
32.00°C	391 W	253 W	2.03 A	1.55 W/W

Test Condition EN13215_RG20: Evaporating temp. -10.00°C, Ambient temp. 32.00°C, Return Gas 20 °C, Subcooling 3K

Performance Curve Data

Ambient Temperature 25°C

Evaporating Temperature °C	Cooling Capacity W	Power Consumption W	Current A	Efficiency W/W
-15	353	227	1.93	1.56
-10	434	246	1.98	1.76
-5	525	266	2.03	1.97
0	625	285	2.08	2.19
5	736	304	2.12	2.42
10	855	322	2.17	2.65

Test Condition EN13215_RG20: Evaporating temp. -10.00°C, Ambient temp. 25.00°C, Return Gas 20 °C, Subcooling 3K

Ambient Temperature 32°C

Evaporating Temperature °C	Cooling Capacity W	Power Consumption W	Current A	Efficiency W/W
-15	320	232	1.98	1.38
-10	391	253	2.03	1.55
-5	473	273	2.08	1.74
0	565	292	2.12	1.93
5	666	311	2.17	2.14
10	777	329	2.22	2.36

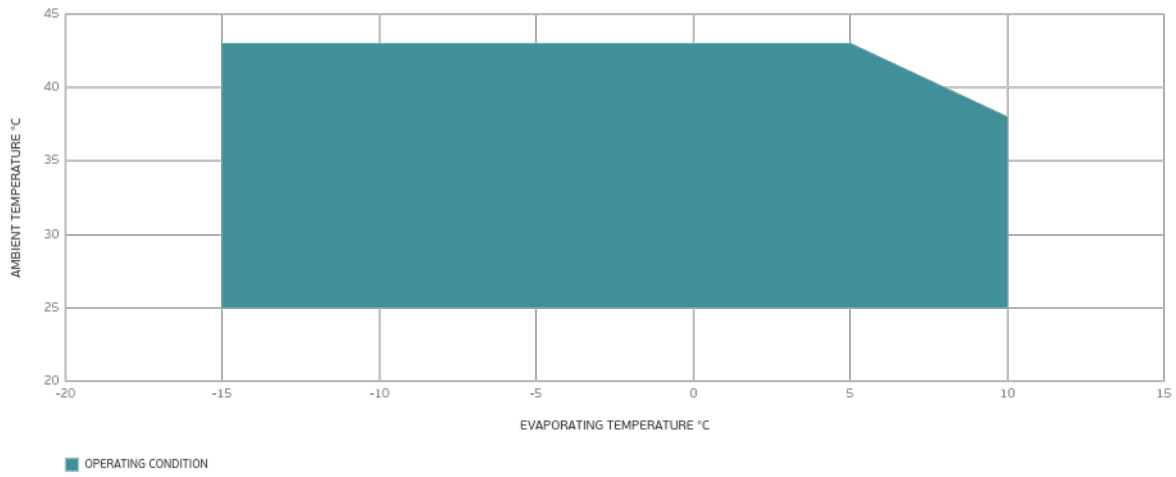
Test Condition EN13215_RG20: Evaporating temp. -10.00°C, Ambient temp. 32.00°C, Return Gas 20 °C, Subcooling 3K

Ambient Temperature 43°C

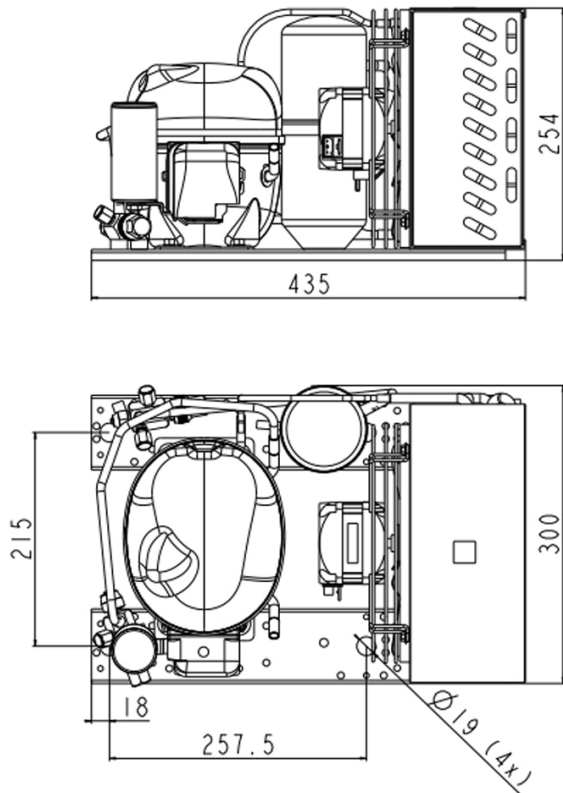
Evaporating Temperature °C	Cooling Capacity W	Power Consumption W	Current A	Efficiency W/W
-15	245	245	2.01	1
-10	307	270	2.07	1.14
-5	380	294	2.13	1.29
0	462	317	2.19	1.46
5	554	340	2.25	1.63
10	656	363	2.31	1.81

Test Condition EN13215_RG20: Evaporating temp. -10.00°C, Ambient temp. 43.00°C, Return Gas 20 °C, Subcooling 3K

Operating Envelope



External Dimensions



Wiring Diagram

