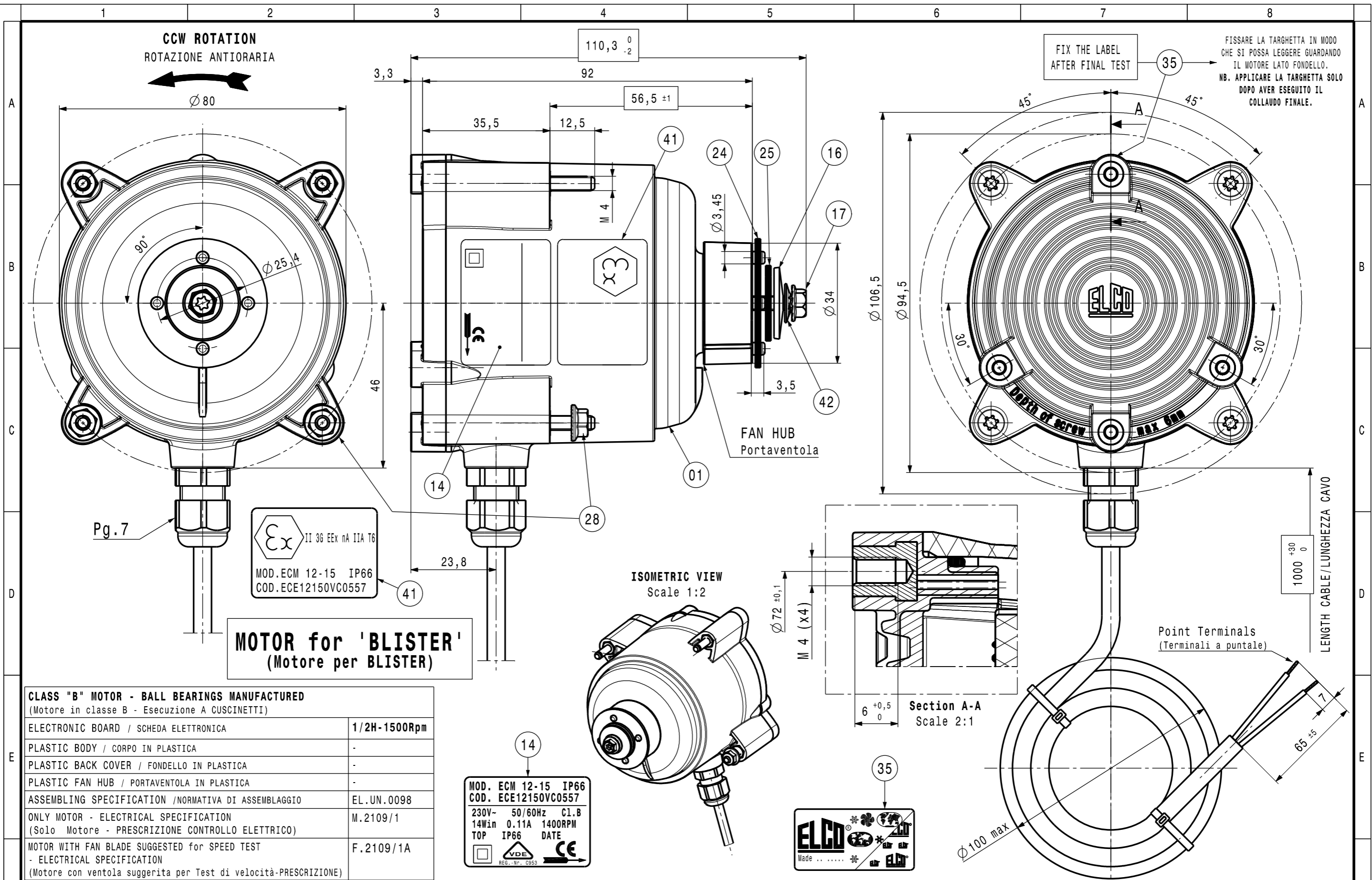


DRAWING MADE BY
CAD
HAND MADE MODIFICATIONS ARE FORBIDDEN



CLASS "B" MOTOR - BALL BEARINGS MANUFACTURED (Motore in classe B - Esecuzione A CUSCINETTI)	
ELECTRONIC BOARD / SCHEDA ELETTRONICA	1/2H-1500Rpm
PLASTIC BODY / CORPO IN PLASTICA	-
PLASTIC BACK COVER / FONDELLO IN PLASTICA	-
PLASTIC FAN HUB / PORTAVENTOLA IN PLASTICA	-
ASSEMBLING SPECIFICATION /NORMATIVA DI ASSEMBLAGGIO	EL.UN.0098
ONLY MOTOR - ELECTRICAL SPECIFICATION (Solo Motore - PRESCRIZIONE CONTROLLO ELETTRICO)	M.2109/1
MOTOR WITH FAN BLADE SUGGESTED for SPEED TEST - ELECTRICAL SPECIFICATION (Motore con ventola suggerita per Test di velocità-PRESCRIZIONE)	F.2109/1A

14

MOD. ECM 12-15 IP66
COD. ECE12150VC0557

230V~ 50/60Hz Cl.B
14W in 0.11A 1400RPM
TOP IP66 DATE

VDE REG.-Nr. C893 CE

For dim. without tolerance see standard UNI EN 22768-mK	Treatment	Material	A3
ELCO	Drawn M.Cazzaniga	MOTOR ECM 12 230V IP66 V	Weight
	Date 07/09/16	230V 50/60Hz	ECET2150NC0186H
	Check E.Crippa	PROTECTION DEGREE IP66	Ref.No R.S.16/0...
	Scale 1:1	ECE12150VC0557	Release -

Rel	Date	Description	Executor signature	Checked
MODIFICATIONS				
1	2	3	4	