

# Pressure gauge

for heating and cooling systems class 2,5/1,0

AT 8305A

Dimension range	PN	Temperature	Material
G 3/8	At short term loading, 90% of scale value	-20°C to +60°C	Plastic/Stainless steel

## Range of Application

For indication of actual pressure in heating/cooling systems. AT 8305A is supplied with a red adjustable pointer on the scale.

## UGC.31 Gauge for pressure

Pipe mounted, with analogue display of instantaneous value. Pressure gauge AT 8305A is provided with red indicator for highest allowed pressure. Class 2,5. Graded 0-... bar.



## Quality Assurance

PED, AFS 1999:4

## Material Specification

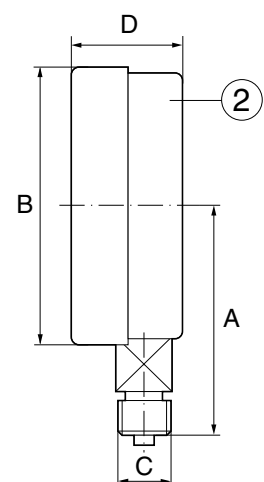
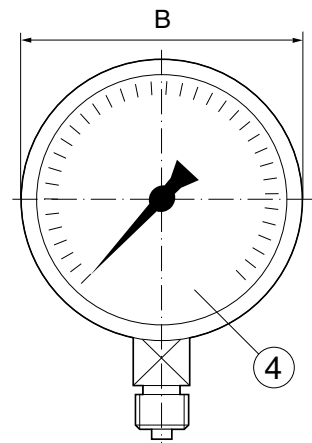
AT 8305A		
1	Bourdon tube	Copper alloy
2	Body	Black plastic ABS
3	Measuring body	Copper alloy
4	Glass	Acrylic glass

Parts in contact with media made of copper alloy.

## Dimension

AT 8305A	
A	85,5
B	100
C	G 3/8
D	30

Measurements in mm.



## Function and Design

The pressure gauge is of the bourdon tube type, which has a circular formed tubular spring with an oval cross section. The pressure in the system influences the bourdon tube internally so that an increase in pressure tends to straighten it out. The free end of the bourdon tube gives a movement proportional to the internal pressure. The movement is then transferred via the measurement unit to a movement/indicated value on the scale. The pressure gauge has a red adjustable pointer to indicate the maximum allowable pressure.

# Pressure gauge

for heating and cooling systems class 2,5/1,0

AT 8305A

## Technical Information

	AT 8305A
Media temperature	-40°C to +60°C
Ambiant Temperature	-20°C to +60°C
Accuracy class	2,5%
Effects of Temperature	0,4%/10°C
IP class	54
Max. working pressure	3/4 of the scale value at rest load. 2/3 of the scale value at fluctuating loads.
Contact function	-
Supply voltage	-
Switch capacity	-
Electrical connection	-

## Dimensioning

The scale area should be selected so that constant load does not exceed 2/3 scale range.

## Accessories and Options

Pressure gauges with electrical contact in muted or industrial design upon request.

## Installation

Pressure gauges shall be mounted so that they are easy to read and protected against vibration, heat, cold and high humidity. At high media temperatures water worm pipes shall be used. When pressure fluctuations and vibrations, damping liquid filled pressure gauge should be used.

The cables are labeled with numbers. Electrical installation according to schematic.

## Marking

AT8305A is marked with Armatec logo.

## How to order AT8305A

Grading	AT.no. (standard)
0-4 bar	8305A-10-4
0-6 bar	8305A-10-6
0-10 bar	8305A-10-10
0-16 bar	8305A-10-16

Rätten till ändringar utan förregående meddelande förbehålls.  
Armatec ansvarar inte för eventuella tryckfel eller misstänksfel.  
Dokumentet får kopieras endast i sin helhet.