

Product information

Controllable backflow valve with internal threads type EA for liquid category 1-2 according to SS-EN 1717.

Dimension range (DN)	10 - 50
PN	10
Temperature (°C)	0 - 95
Main material	Brass



Area of use

To protect the drinking water system internally and externally from backflow and pressure backflow, a controllable backflow valve type EA for liquid category 1-2 is required.

Tender text

PSE.31 Check valves in liquid systems

Check valve, controllable, made of dezincification-resistant brass AT 1159-... internal thread.

Quality assurance

Fluid category 2, SS-EN 1717

Protective covering for liquid category 1-2. The backflow preventer is of type EA in accordance with SS-EN 1717.

Product marking: Brand, material, dimension, and arrow indicating flow direction.

Energy and environment declaration

Product Bvb: Avoided

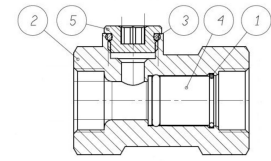
Product BVB ID: 48998

SundaHus: C-

Reach notification obligation

Detailed list

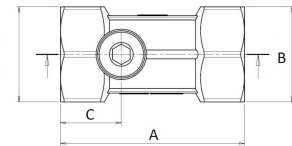
Pos	Component	Material
1	Sealing-ring	Brass
2	Valve body	Brass (CuZn36Pb2As) (CW602N)
3	O-ring	EPDM (ethylene propylene diene monomer rubber)
4	Fixating ring	
5	Tap	Brass (CuZn36Pb2As) (CW602N)



Measurements and weight

Dimension range (DN): 10 - 50

DN	A	B	C
10	46	25	15.5
15	46	25	15.5
20	62	32	20.5
25	73.5	40	22.5
32	84	50	25
40	101		29
50	112.5		28.5



Function and design

The valve has a spring-loaded cone, which means it can be installed in any built-in position and will close before the flow direction changes. In order for the check valve 1159 to meet the requirement according to SS-EN1717 as a protection module type EA, a shut-off valve must always be installed just before the check valve. This is necessary to enable control to be carried out.

The check valve belongs to type EA and provides protection coverage for liquid up to category 2. The valve has an outlet upstream, which is equipped with a plug. The outlet is used to check the function and tightness of the check valve.

Technical data

Main material: Brass

Main material code: Brass dezincification resistant (DZR)

Included materials: Brass, Stainless steel, Plastic, Rubber

Included material code: Stainless steel 304 (1.4301), Brass dezincification resistant (DZR), NBR (nitrile butadiene rubber)

Temperature (°C): 0 - 95

PN: 10

Connection: Internal thread ISO 228-1 (G, BSPP)

ETIM classification: EC011469 - Check valve

BK04 code: 20711 Non-return valves

BIM link: <https://redir.magicad.cloud/product/5a46b552-c584-4c19-a67d-f193bdd5865a>

Installation and maintenance

Flowdirection: Uni-directional

Possible mounting position: Horizontal

In case of a need for larger dimensions, the Controllable Check Valve AT 1161 is selected. The check valves are designed with flanges DN 50-200. To ensure that this check valve meets the requirement according to SS-EN1717 as a protection module type EA, a shut-off valve must always be installed just before the check valve.

Please feel free to contact us

We answer your questions by e-mail and telephone. No question is too small, no challenge is too big. You are always welcome at Armatec.

info@armatec.se | +46 31 89 01 00 | www.armatec.se

THE COMPANY'S MANAGEMENT SYSTEM
IS CERTIFIED BY DNV
ISO 9001 • ISO 14001