



## Product information

Brass ball valve, full bore, PN 25, with internal and external threads and steel handle. Graphite packing. Suitable for heating, cooling, air and gas systems. Can also be used for vacuum and lighter oils.

Dimension range (DN)	10 - 50
PN	40
Temperature (°C)	0 - 150
Material	Brass



## Area of use

Shut-off valve for heating, cooling, air, and gas systems. Can also be used for vacuum and lighter oils, see also section "Installation". Silicone-free.

## Tender text

### **PSB.1 Ball valves**

Brass ball valve AT 3640, G... with full bore, internal and external thread, and steel handle. Graphite packing.

## Quality assurance

AFS 2016:1, 8 paragraf

**Product marking:** Brand and DN.

## Energy and environment declaration

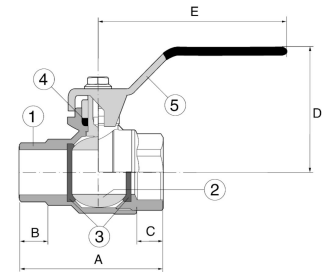
**Product Bvb:** Avoided

**Product BVB ID:** 52753

**SundaHus:** C-

**Reach notification obligation**

Pos	Component	Material
-----	-----------	----------



## Measurements and weight

**Dimension range (DN):** 10 - 50

DN	A	B	C	D
10	47	10	9	41
15	56	12	12	53
20	65	12	12	57
25	76	16	15	65
32	91	18	16	71
40	105	19	17	79
50	122	21	19	87

## Function and design

AT 3640 has a so-called "blow-out safe" spindle. The valves have full passage.

## Technical data

**Material:** Brass

**Material code:** Brass (CuZn40Pb2) (CW617N) (2.0402)

**Included materials:** Brass, Steel, Other

**Included material code:** Brass CuZn39Pb2 (CW612N), Brass (CuZn40Pb2) (CW617N) (2.0402)

**Temperature (°C):** 0 - 150

**Temperature notes:** For air -10C

**PN:** 40

**Connection:** Internal thread ISO 228-1 (G, BSPP), External thread ISO 228-1 (G, BSPP)

**ETIM classification:** EC011343 - Ball valve

**BK04 code:** 20702 Ball valves

## Installation and maintenance

**Flowdirection:** Bi-directional

**Possible mounting position:** Vertical, Horizontal

---

The valves have internal/external pipe threads.

Tightening of the packing may be necessary for air and gas systems when the test pressure exceeds 6 bar. The valve should be exercised regularly to avoid the accumulation of dirt that can lead to leakage.

Please feel free to contact us

We answer your questions by e-mail and telephone. No question is too small, no challenge is too big. You are always welcome at Armatec.

[info@armatec.se](mailto:info@armatec.se) | +46 31 89 01 00 | [www.armatec.se](http://www.armatec.se)

THE COMPANY'S MANAGEMENT SYSTEM  
IS CERTIFIED BY DNV  
ISO 9001 • ISO 14001