

 PRESTERA™

Product information

Ball valve with full passage made of steel/CPTFE with internal threads and mounting flange for actuator. Suitable for automation. Three-piece for easy service and maintenance. Primarily for steam, gas, hot and cold water.

| | |
|----------------------|-----------|
| Dimension range (DN) | 10 - 50 |
| PN | 64 - 125 |
| Temperature (°C) | -28 - 220 |
| Main material | Steel |

Area of use

Shut-off valve primarily for:

- Petroleum products
- Hot and cold water as well as compressed air
- Saturated steam

Tender text

PSB.1 Ball valves

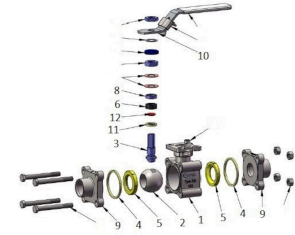
Steel ball valve AT 3565..., with full bore, internal thread, and steel handle. Packing made of carbon-filled PTFE.

Quality assurance

PED 2014/68/EU, AFS 2016:1

Product marking: Manufacturer, DN, PN, material code, CE. If applicable, also include flow direction.

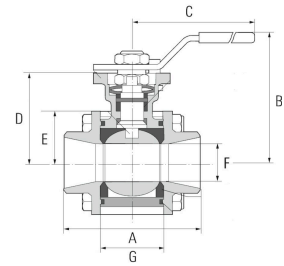
| Pos | Component | Material |
|-----|-----------|----------|
|-----|-----------|----------|



Measurements and weight

Dimension range (DN): 10 - 50

| DN | A | B | C | Net weight (kg) |
|----|-----|-------|-----|-----------------|
| 15 | 75 | 76.6 | 140 | 0.9 |
| 20 | 86 | 81.7 | 140 | 1.4 |
| 25 | 106 | 98.3 | 170 | 2.1 |
| 32 | 111 | 101.6 | 170 | 2.9 |
| 40 | 130 | 128 | 230 | 4.4 |
| 50 | 143 | 137 | 230 | 4.5 |



Function and design

Three-piece ball valve for easy service and maintenance.

Homogeneous liquid ball for tight shut-off and low pressure drop.

Self-compensating spindle packing provides a tight valve at high operating frequencies.

Blow-out safe antistatic spindle construction prevents the spindle from being pushed out during pressure surges.

Mounting flange according to ISO 5211 for actuators.

No valve disassembly required for service and installation of actuators.

Valves larger than DN50 have a round valve body/mounting flange.

Technical data

Main material: Steel

Main material code: Steel GP240GH N (1.0619)

Included materials: Stainless steel, Steel, Other

Included material code: Acid resistant stainless steel AISI 316 (1.4401), Steel GP240GH N (1.0619), Carbon filled PTFE

Temperature (°C): -28 - 220

PN: 64 - 125

Connection: Internal thread ISO 228-1 (G, BSPP)

ETIM classification: EC011343 - Ball valve

BK04 code: 20702 Ball valves

| Item number | KVS | Execution | Connection 1 | Connection 1 - spec. | Connection 2 | Connection 2 - spec. |
|-------------|-------|-----------|-------------------------------------|----------------------|-------------------------------------|----------------------|
| 3565-15 | 12.7 | Full bore | Internal thread ISO 228-1 (G, BSPP) | 1/2 | Internal thread ISO 228-1 (G, BSPP) | 1/2 |
| 3565-15PK | 12.7 | Full bore | Internal thread ISO 228-1 (G, BSPP) | 1/2 | Internal thread ISO 228-1 (G, BSPP) | 1/2 |
| 3565-20 | 29.2 | Full bore | Internal thread ISO 228-1 (G, BSPP) | 3/4 | Internal thread ISO 228-1 (G, BSPP) | 3/4 |
| 3565-25 | 48.2 | Full bore | Internal thread ISO 228-1 (G, BSPP) | 1 | Internal thread ISO 228-1 (G, BSPP) | 1 |
| 3565-32 | 73.1 | Full bore | Internal thread ISO 228-1 (G, BSPP) | 1 1/4 | Internal thread ISO 228-1 (G, BSPP) | 1 1/4 |
| 3565-40 | 107.5 | Full bore | Internal thread ISO 228-1 (G, BSPP) | 1 1/2 | Internal thread ISO 228-1 (G, BSPP) | 1 1/2 |
| 3565-50 | 215 | Full bore | Internal thread ISO 228-1 (G, BSPP) | 2 | Internal thread ISO 228-1 (G, BSPP) | 2 |

Installation and maintenance

Flowdirection: Bi-directional

Possible mounting position: Vertical, Horizontal

The valve should be regularly exercised to avoid the accumulation of dirt that can lead to leakage.

Please feel free to contact us

We answer your questions by e-mail and telephone. No question is too small, no challenge is too big. You are always welcome at Armatec.

info@armatec.se | +46 31 89 01 00 | www.armatec.se

THE COMPANY'S MANAGEMENT SYSTEM
IS CERTIFIED BY DNV
ISO 9001 • ISO 14001