

★★★★  
PRESTERA™

## Product information

Ball valve with reduced flow of steel/CPTFE with internal threads and mounting flange for actuator. Suitable for automation. Three-piece for easy service and maintenance. Primarily for steam, gas, hot and cold water.

Dimension range (DN)	15 - 50
PN	100 - 125
Temperature (°C)	-28 - 220
Main material	Steel

## Area of use

Shut-off valve primarily for:

- Petroleum products
- Hot and cold water as well as compressed air
- Saturated steam

## Tender text

### **PSB.1 Ball valves**

Steel ball valve AT 3560... with reduced flow, internal thread, and steel handle. Packing made of carbon-filled PTFE.

## Quality assurance

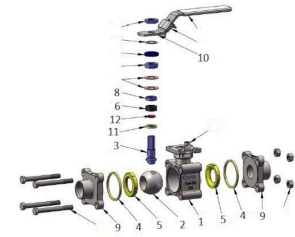
PED 2014/68/EU, AFS 2016:1

### **The product is CE marked**

Testing is carried out according to ISO 5208. Leakage class A applies to the valve type. The valve is approved according to TA-luft. Material certificate according to EN 10204-3.1 is available.

**Product marking:** Manufacturer, DN, PN, material code, CE. If applicable, also flow direction. QR code.

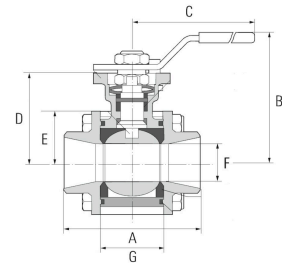
Pos	Component	Material
-----	-----------	----------



## Measurements and weight

**Dimension range (DN):** 15 - 50

DN	A	B	C	D	Net weight (kg)
15	75	76.6	140	42.6	0.9
20	75	76.6	140	42.6	0.9
25	90	81.7	140	46.8	1.4
32	110	98.3	170	59.3	2.2
40	115	101.6	170	62.6	3.5
50	130	128	230	79	2.9



## Function and design

Three-piece ball valve for easy service and maintenance.  
 Homogeneous liquid ball for tight shut-off and low pressure drop.  
 Self-compensating spindle packing provides a tight valve at high operating frequencies.  
 Blow-out safe antistatic spindle construction prevents the spindle from being pushed out during pressure surges.  
 Mounting flange according to ISO 5211 for actuators.  
 No valve disassembly required for service and installation of actuators.  
 Valves larger than DN50 have a round valve body/mounting flange.

## Technical data

**Main material:** Steel

**Main material code:** Steel GP240GH N (1.0619)

**Included materials:** Stainless steel, Steel, Other

**Included material code:** Acid resistant stainless steel AISI 316 (1.4401), Steel GP240GH N (1.0619), PTFE (polytetrafluoroethylene), Carbon filled PTFE

**Temperature (°C):** -28 - 220

**PN:** 100 - 125

**Connection:** Internal thread ISO 228-1 (G, BSPP)

**ETIM classification:** EC011343 - Ball valve

**BK04 code:** 20702 Ball valves

Item number	KVS	Execution	Connection 1	Connection 1 - spec.	Connection 2	Connection 2 - spec.
3560-15	6.9	Reduced bore	Internal thread ISO 228-1 (G, BSPP)	1/2	Internal thread ISO 228-1 (G, BSPP)	1/2
3560-20	12.7	Reduced bore	Internal thread ISO 228-1 (G, BSPP)	3/4	Internal thread ISO 228-1 (G, BSPP)	3/4
3560-20PK	12.7	Reduced bore	Internal thread ISO 228-1 (G, BSPP)	3/4	Internal thread ISO 228-1 (G, BSPP)	3/4
3560-25	29.2	Reduced bore	Internal thread ISO 228-1 (G, BSPP)	1	Internal thread ISO 228-1 (G, BSPP)	1
3560-25PK	29.2	Reduced bore	Internal thread ISO 228-1 (G, BSPP)	1	Internal thread ISO 228-1 (G, BSPP)	1
3560-32	48.2	Reduced bore	Internal thread ISO 228-1 (G, BSPP)	1 1/4	Internal thread ISO 228-1 (G, BSPP)	1 1/4
3560-32PK	48.2	Reduced bore	Internal thread ISO 228-1 (G, BSPP)	1 1/4	Internal thread ISO 228-1 (G, BSPP)	1 1/4
3560-40	73.1	Reduced bore	Internal thread ISO 228-1 (G, BSPP)	1 1/2	Internal thread ISO 228-1 (G, BSPP)	1 1/2
3560-50	107.5	Reduced bore	Internal thread ISO 228-1 (G, BSPP)	2	Internal thread ISO 228-1 (G, BSPP)	2

## Installation and maintenance

**Flowdirection:** Bi-directional

**Possible mounting position:** Vertical, Horizontal

The valve should be regularly exercised to avoid the accumulation of dirt that can lead to leakage.

Please feel free to contact us

We answer your questions by e-mail and telephone. No question is too small, no challenge is too big. You are always welcome at Armatec.

[info@armatec.se](mailto:info@armatec.se) | +46 31 89 01 00 | [www.armatec.se](http://www.armatec.se)

THE COMPANY'S MANAGEMENT SYSTEM  
IS CERTIFIED BY DNV  
ISO 9001 • ISO 14001