

★★★★  
PRESTERA™

## Product information

Ball valve with full passage made of stainless steel/CPTFE with internal threads and mounting flange for actuators. Suitable for automation. Three-piece for easy service and maintenance. Primarily for acids and salt solutions, gas, steam, hot and cold water.

Dimension range (DN)	8 - 50
PN	64 - 125
Temperature (°C)	-30 - 220
Main material	Stainless steel

## Area of use

Shut-off valve primarily for:

- Alkalis, acids, and salt solutions
- Solvents and alcohols
- LPG, natural gas, and petroleum products
- Hot and cold water as well as compressed air
- Saturated steam (see diagram)

## Tender text

### **PSB.1 Ball valves**

Stainless steel ball valve AT 3525... with full bore, internal thread, and stainless steel lever. Packing made of carbon-filled PTFE.

## Quality assurance

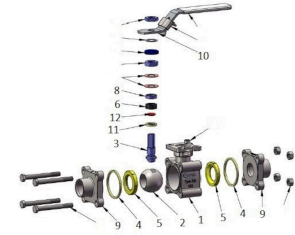
AFS 2016:1, ATEX 2014/34/EU, SIL3, TA-air

### **The product is CE marked**

Testing is carried out according to ISO 5208. Leakage class A applies to the valve type. The valve is approved according to TA-luft. Material certificate according to EN 10204-3.1 is available. FDA (seats made of PPTFE).

**Product marking:** Manufacturer, DN, PN, material code, CE. If applicable, also flow direction. QR code.

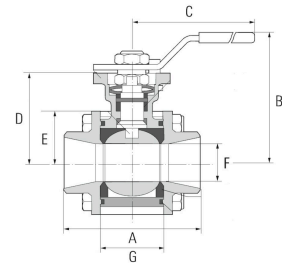
Pos	Component	Material
-----	-----------	----------



## Measurements and weight

**Dimension range (DN):** 8 - 50

DN	A	B	C	Net weight (kg)
8	75	76.6	140	1
10	75	76.6	140	1
15	75	76.6	140	1
20	86	81.7	140	1.4
25	106	98.3	170	2.1
32	111	101.6	170	2.9
40	130	128	230	4.4
50	143	137	230	4.5



## Function and design

Three-piece ball valve for easy service and maintenance.

No disassembly or packing replacement required during welding.

Homogeneous flowing ball for tight shut-off and low pressure drop.

Self-compensating spindle packing provides tight valve closure at high operating frequency.

Blow-out proof antistatic spindle construction prevents the spindle from being pushed out during pressure surges.

Mounting flange according to ISO 5211 for actuator operation.

No valve disassembly required during service and installation of actuator.

Valves larger than DN50 have a round valve body/mounting flange.

## Technical data

**Main material:** Stainless steel

**Main material code:** Acid resistant stainless steel AISI 316 (1.4401), Acid resistant stainless steel AISI 316 (1.4408, CF8M) , Acid resistant stainless steel AISI 316 (1.4409)

**Included materials:** Stainless steel, Other

**Included material code:** Acid resistant stainless steel AISI 316 (1.4401), Acid resistant stainless steel AISI 316 (1.4408, CF8M) , Acid resistant stainless steel AISI 316 (1.4409), PTFE (polytetrafluoroethylene), Carbon filled PTFE

**Temperature (°C):** -30 - 220

**PN:** 64 - 125

**Connection:** Internal thread ISO 228-1 (G, BSPP)

**ETIM classification:** EC011343 - Ball valve

**BK04 code:** 20702 Ball valves

Item number	KVS	Execution	Connection 1	Connection 1 - spec.	Connection 2	Connection 2 - spec.
3525-8	6.9	Full bore				
3525-10	6.9	Full bore	Internal thread ISO 228-1 (G, BSPP)	3/8	Internal thread ISO 228-1 (G, BSPP)	3/8
3525-15	12.7	Full bore	Internal thread ISO 228-1 (G, BSPP)	1/2	Internal thread ISO 228-1 (G, BSPP)	1/2
3525-20	29.2	Full bore	Internal thread ISO 228-1 (G, BSPP)	3/4	Internal thread ISO 228-1 (G, BSPP)	3/4
3525-25	48.2	Full bore	Internal thread ISO 228-1 (G, BSPP)	1	Internal thread ISO 228-1 (G, BSPP)	1
3525-32	73.1	Full bore	Internal thread ISO 228-1 (G, BSPP)	1 1/4	Internal thread ISO 228-1 (G, BSPP)	1 1/4
3525-40	107.5	Full bore	Internal thread ISO 228-1 (G, BSPP)	1 1/2	Internal thread ISO 228-1 (G, BSPP)	1 1/2
3525-50	215	Full bore	Internal thread ISO 228-1 (G, BSPP)	2	Internal thread ISO 228-1 (G, BSPP)	2

## Installation and maintenance

**Flowdirection:** Bi-directional

**Possible mounting position:** Vertical, Horizontal

Welded-end valves can be welded without disassembly provided that the ball is in the open position. See separate manual for instructions. The valve should be operated regularly to avoid the accumulation of dirt that can lead to leakage.

Please feel free to contact us

We answer your questions by e-mail and telephone. No question is too small, no challenge is too big. You are always welcome at Armatec.

[info@armatec.se](mailto:info@armatec.se) | +46 31 89 01 00 | [www.armatec.se](http://www.armatec.se)

THE COMPANY'S MANAGEMENT SYSTEM  
IS CERTIFIED BY DNV  
ISO 9001 • ISO 14001